

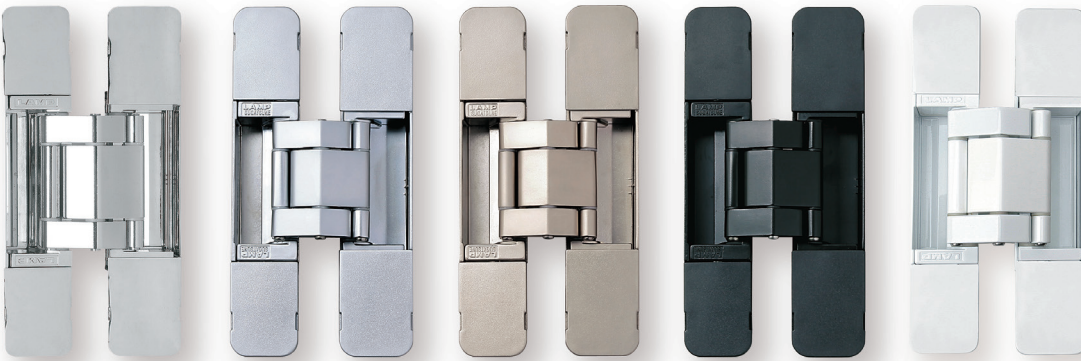
3-WAY ADJUSTABLE CONCEALED HINGE



HES3D-E190

HINGES

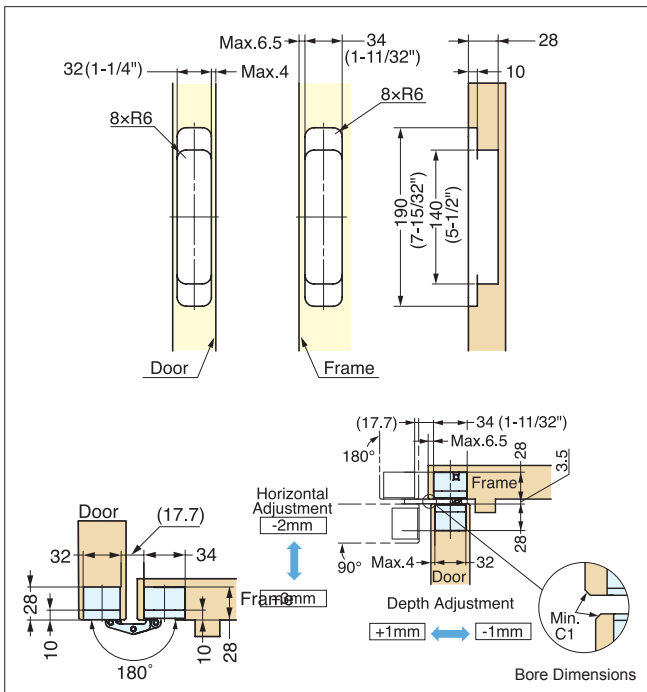
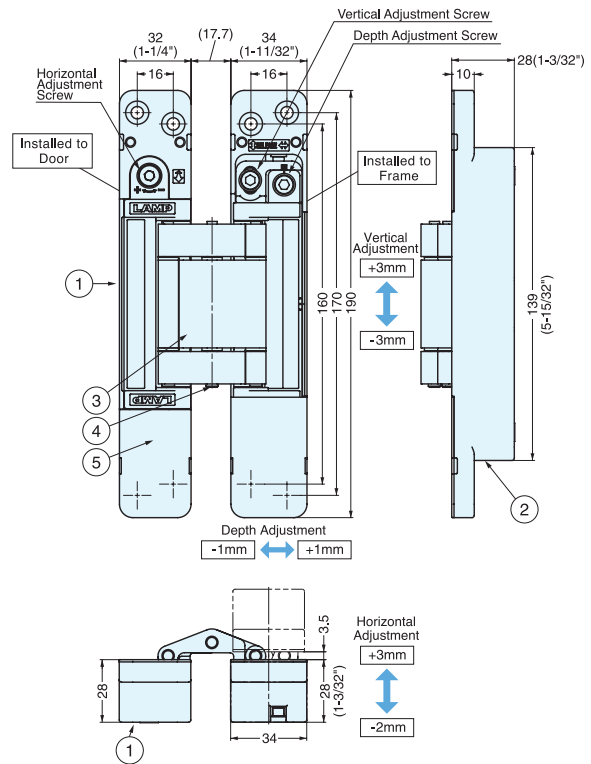
3-WAY ADJUSTABLE CONCEALED HINGES



HES3D-E190PN-UL HES3D-E190DC-UL HES3D-E190DN-UL HES3D-E190BL-UL HES3D-E190WT-UL



- 3-WAY adjustment function allows vertical, horizontal, and depth adjustment after hinge installed.
- Easy installation with LIFT-OFF FEATURE: can be split into two parts (one for the frame and one for the flap), can temporarily be hung and hold position without being affixed with screws.
- Successfully passed 300,000 open/close private cycle tests.
- UL Rated, up to 3 Hours
- Supplied with steel flat head screw.
- Covers hide all screw heads for clean appearance.
- Door weight : Max. 100 kg (220 lbs)/2 pcs, 125 kg (275 lbs)/3 pcs.
- Door Thickness : Min. 38 mm (1-1/2").
- Max. Door Size : H 2400 mm (94-1/2") × W 914 mm (36").
- Bracket for sheet metal doors and frames available (sold separately).
- Metal cover plates available for Polished Nickel (PN) finish HES3D-E190PN-CM (sold separately).



Item No.	Weight (g)	Box (pcs)	Carton (pcs)
HES3D-E190PN-UL	1050	2	12
HES3D-E190DC-UL			
HES3D-E190DN-UL			
HES3D-E190BL-UL			
HES3D-E190WT-UL			

No.	Part Name	Material	Finish/Color
①	Body	Zinc Alloy	Polished Nickel (PN) Dull Chrome (DC) Dull Nickel (DN) Matte Black (BL) White (WT)
②	Base Frame	Zinc Alloy	Polished Nickel (PN) Dull Chrome (DC) Dull Nickel (DN) Matte Black (BL) White (WT)
③	Arm	Aluminum Alloy	Polished Nickel (PN) Dull Chrome (DC) Dull Nickel (DN) Matte Black (BL) White (WT)
④	Pin	304 Stainless Steel	-
⑤	Cover	ABS	Polished Nickel (PN) Dull Chrome (DC) Dull Nickel (DN) Matte Black (BL) White (WT)