



DIRECT
SUPPLY INC
SURFACE MATERIALS \ CABINETRY \ HARDWARE

CABINETRY OPTIONS





DESIGN QUESTIONS AND ASSISTANCE?

Heidi J. De Young CKBD

Certified Kitchen and Bath Designer!

HEIDI@DIRECTSUPPLYINC.COM

- Quotes

- Design Service - 2020 floorplan and views

- Project Reviews - let us be your second set of eyes

- Trade Showroom & Meeting Space

ORDERS

Sales@directsupplyinc.com

We're here to help!



DIRECT
SUPPLY INC

1055 36th Street SE, Grand Rapids, MI 49508

www.directsupplyinc.com

P: 616-245-4415



DIRECT
SUPPLY INC
SURFACE MATERIALS \ CABINETRY \ HARDWARE

TABLE OF CONTENTS

EST. 1998
LEGACY CRAFTED PG.4
CABINETS

Semi-Custom, hand-crafted cabinetry.

Cabinet customizations and custom finishes are available!

 PG.15

Condensed offering from Legacy Crafted Semi-Custom line at an attractive price point!

VIVA Plus PG.17
BY LEGACY CRAFTED CABINETS

Condensed offering from Legacy Crafted Not Custom line at an attractive price point & trendy White Oak

 **RiverRun** PG.22
CABINETRY

Made to Order cabinetry with some modifications available.

Multiple Door Styles & Finishes are available



WOLF HOME PRODUCTS™ ... PG.31

WOLF BUILDERS MARK ... PG.32

Three Door Style, Multiple Finishes

WOLF CLASSIC CABINETS ... PG.36

Range from Quick Ship to some modifications. Multiple Door Styles & Finishes

WOLF ENDURANCE - OUTDOOR CABINETS ... PG.53

Aluminum Construction - Powder Coat Finish - 2 Door Style & 3 Finishes

WOLF VANITY TOPS ... PG.61

Quartz, Granite, Engineered Stone, & Solid Surface

WOLF SHOWERS ... PG.70

Walls, Bases, & Niches



EST. 1998

LEGACY CRAFTED

CABINETS

hand crafted cabinetry

MADE IN PENNSYLVANIA



One cabinet at a time



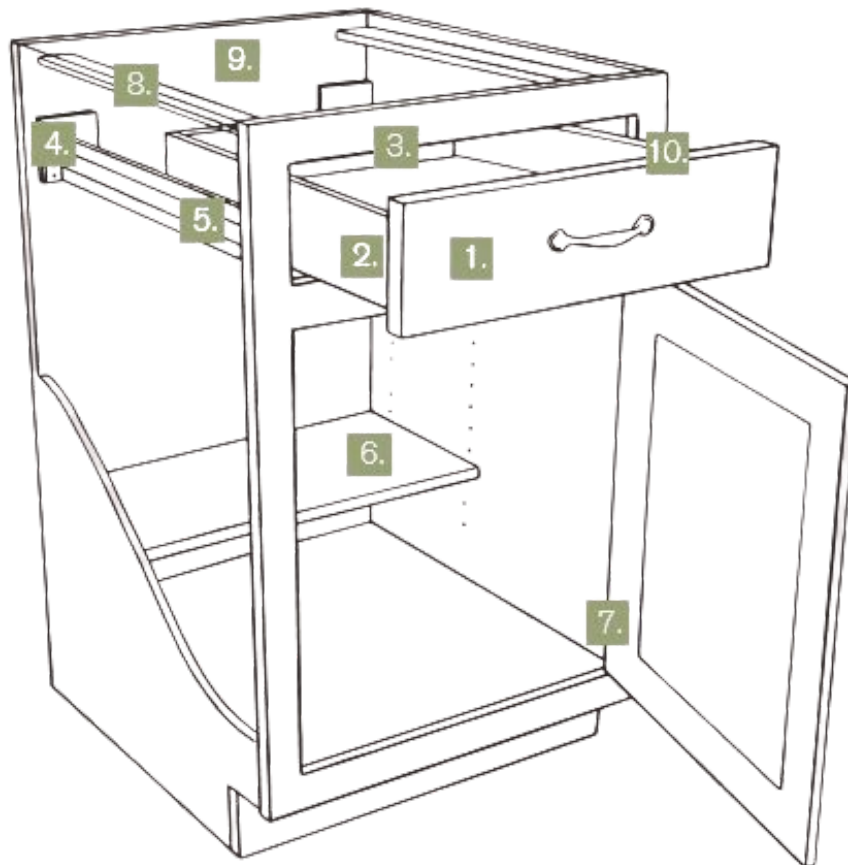
- Door profiles for every style
- Variety of wood species options
- Hand-applied finish options
- Three construction types
- Any Sherwin-Williams Paints
- Wide array of standard cabinets
- Customizations available
- Soft close doors & drawers



DIRECT
SUPPLY INC

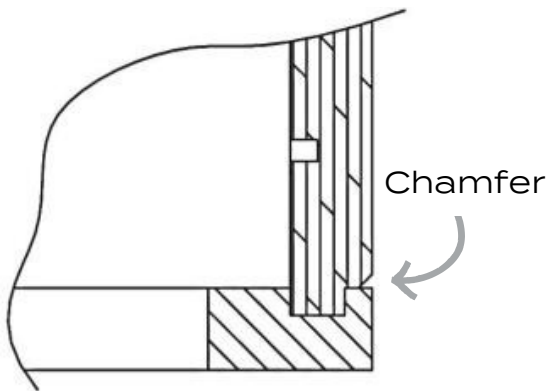
CABINET CONSTRUCTION

1. Solid wood face frame & drawer boxes
2. 5/8" thick dovetail drawer construction
3. Full-depth drawer construction
4. 100 lb. static under-mount drawer glides
5. Soft-close full-extension drawers
6. 3/4" thick adjustable shelving
7. 6-way soft-close adjustable hinges
8. 3/4" thick full-depth plywood I-beam dadoed into sides and face frame
9. 1/4" back panel with 1/2" nailer
10. 1/2" side panels

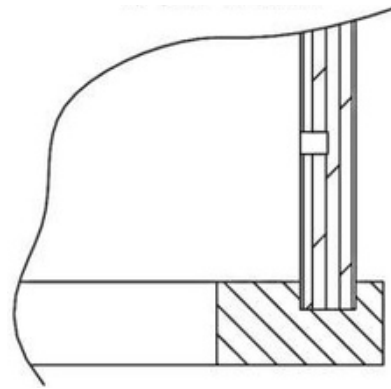


FINISHED ENDS

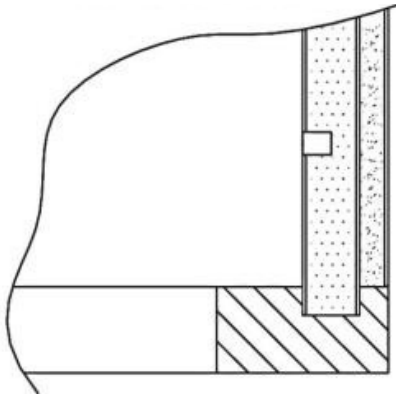
3/4" Finished Plywood
Flush Finished End Panels



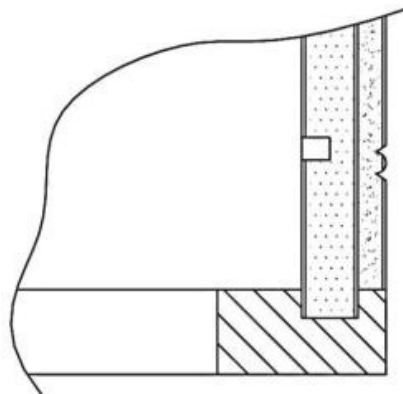
1/2" Finished Plywood
Integrated End Panels



1/4" Finished End Panel "Skins"



1/4" Finished Bead Board
End Panel "Skins"



DOOR STYLES

O=Oak, M=Maple, C=Cherry, H=Hickory



Chelsea* O-M-C



Haywood* O-M-C



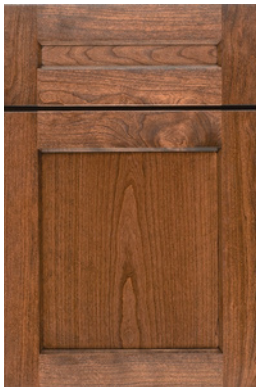
Duval* O-M-C-H



Griffin* O-M-C-H



Cortland O-M-C



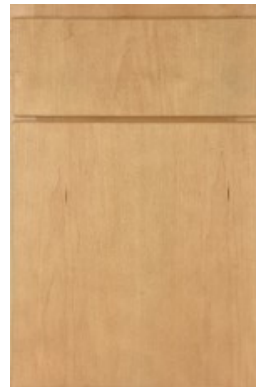
Milton O-M-C



Mifflin O-M-C



Denton O-M-C



Astoria M-C



Hamilton O-M-C-H



Caldwell O-M-C-H



Payton O-M-C



Essex O-M-C



Winfield O-M-C



Avalon O-M-C-H

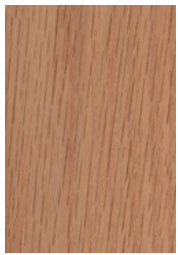


Strata** Laminated



Juno O-M-C

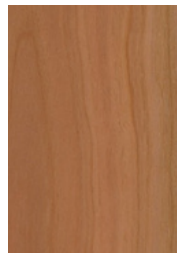
STANDARD STAINS



Oak-Natural



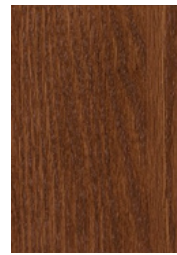
Maple-Natural



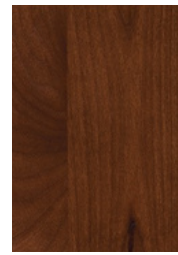
Cherry-Natural



Hickory-Natural



Oak-latte



Maple-Latte



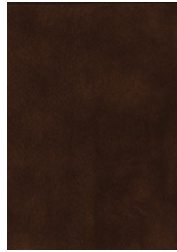
Cherry-Latte



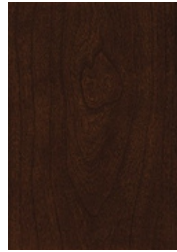
Cherry
Antique Barrel



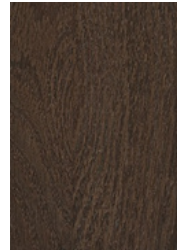
Oak-Suede



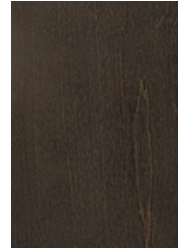
Maple-Suede



Cherry-Suede



Oak-Caraway



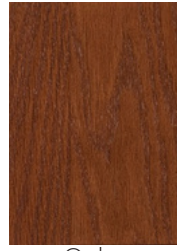
Maple-Caraway



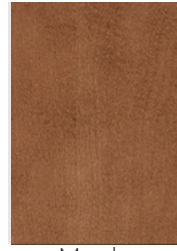
Cherry-Caraway



Hickory-Latte



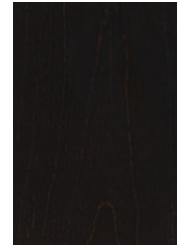
Oak
Antique Barrel



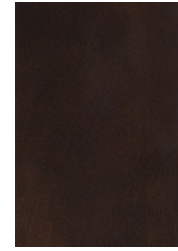
Maple
Antique Barrel



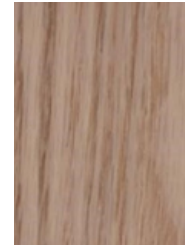
Oak-Java



Maple-Java



Cherry-Java

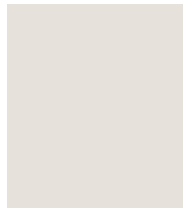


Oak-Butter Pecan

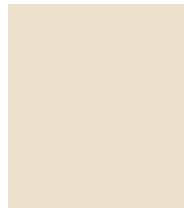
STANDARD PAINTS



Glacier White



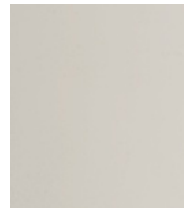
Origami White



Casa Blanca



Silver Mist



Greek Villa



Anew Grey



Warm Stone



African Gray



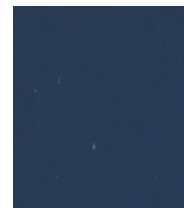
Peppercorn



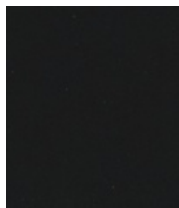
Bottle Green



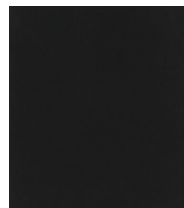
Gale Force



Indigo Batik



Inkwell



Black

**DON'T SEE A PAINT YOU LOVE?
 PICK ANY COLOR FROM SHERWIN-WILLIAMS!**

1055 36th Street SE, Grand Rapids, MI 49508

www.directsupplyinc.com | P: 616-245-4415 | sales@directsupplyinc.com



OPTIONAL PREMIUM FINISHES



METRO SERIES



STRATA SERIES



* Traditional Overlay
 ** Painted Face Frame

PREMIUM FINISHES

Hand-Applied Stains

Available in select species, this collection of unique finishes gives homes an authentic, rustic look. The character grade appearances from our Premium finishes are as beautiful as the essence it captures.

Hand-Rubbed Glazing

Glazing is the process of hand-applying a finish that is meant to mimic the natural aging of a cabinet, molding, or accessory. This hand-applied finish will give the impression of the natural patina that would normally take years to occur.

FINISH PACKAGES

Vintage



Features Sand-Thru and Roundover finishing techniques .

Cottage



Features Sand-Thru and Roundover finishing techniques .
More severe than Vintage Package.

Rustic

In addition to Sand-Thru and Roundover, Splits/Checks, Worm Holes, Dents/Dings, and Rasping.



STORAGE SOLUTIONS

SUPER SINK BASE DRAWER BREAD BOX APPLIANCE GARAGE REVOLVING BASE CABINET
 REFRIGERATOR WINE RACK PULL-OUT LAUNDRY BIN REVOLVING OVERHEAD CABINET TRAY DIVIDERS
 REVOLVING CORNER BASE WITH PULL-OUT SHELVES

POTS AND PANS PULL-OUT



**ADJUSTABLE PANTRY SHELVES
 ROLL-OUT PANTRY SHELVES**



GLASS DOORS WITH GLASS INCLUDED



**CUTTING BOARD WITH
 PULL-OUT CUTLERY TRAY**



TOEKICK DRAWER



**2-DRAWER BASE
 W/2 PULL-OUT TRAYS**



DRAWER PEG ORGANIZER



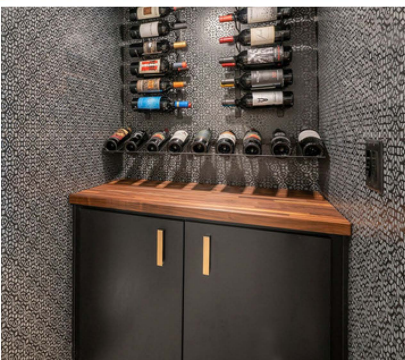
**PULL-OUT DOUBLE
 RECYCLING/GARBAGE BINS**



6" FILLER ORGANIZER







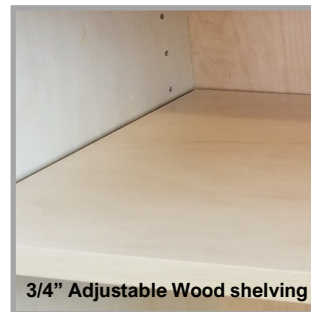


Introducing . . .



Our Primo Series includes:

- Full overlay shaker maple door with 5 pc drawer head
- UV plywood construction
- 3/4" fully adjustable plywood shelving
- Soft close doors and drawers
- Full access-dovetail drawers
- 5/8" thick UV plywood drawers
- Finished end options including field applied no charge laminated skins
- 5 finishes - 3 stains and 2 paints
- Built to order in the USA



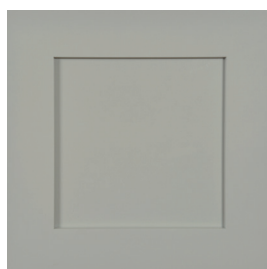
3/4" Adjustable Wood shelving



5/8" Thick Plywood Drawers



Glacier White on Maple



Mindful Grey on Maple



Natural on Maple



Praline on Maple



Stone on Maple

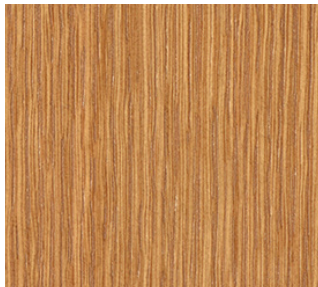
VIVA Plus
BY LEGACY CRAFTED CABINETS

VIVA Plus

WHITE OAK



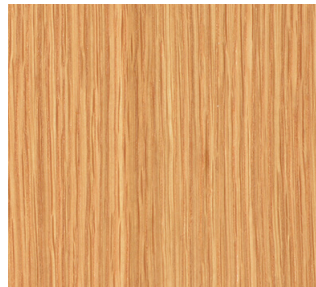
Antique Barrel



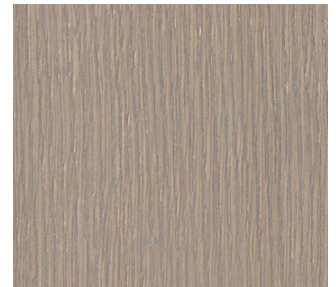
Butter Pecan



Natural



Sparrow



- Rift-cut, white oak, 3/4" MDF core plywood (AA-1)
- 1mm white oak veneer edge band.



European Technology : American Craftsmanship

Full-Access / Frameless Cabinetry

Colors shown may vary from actual sample set.



DIRECT
SUPPLY INC
SURFACE MATERIALS \ CABINETS \ HARDWARE

1055 36th Street SE
Grand Rapids, MI 49508
616.245.44.15
sales@directsupplyinc.com

VIVA Plus

MAPLE (STAINED)



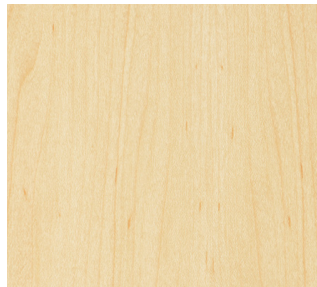
Antique Barrel



Butter Pecan



Natural



Sparrow



- White maple, 3/4" MDF core plywood. (A1)
- 1mm white maple veneer edge band.



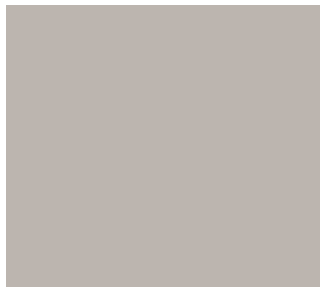
European Technology : American Craftsmanship
Full-Access / Frameless Cabinetry
Colors shown may vary from actual product.

VIVA Plus

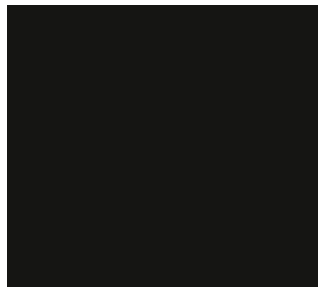
PAINTED



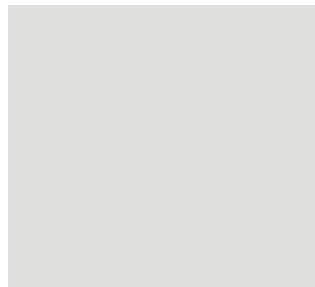
Anew Gray



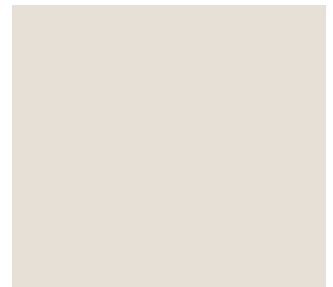
Black



Glacier



Origami White



- 3/4" solid double refined MDF.



European Technology : American Craftsmanship
Full-Access / Frameless Cabinetry
Colors shown may vary from actual product.

1 Box/Case

- 3/4" thick UV coated birch/maple plywood.
- Front edge of case is edge-banded with 1 mil edgeband to match door/drawer front color.
- All cutting/machining done with state of the art European technology.

2 Tops and Bottoms

- Industrial grade 3/4" thick particleboard with face edge-banded to match door/drawer front.
- UV coated surface.

3 Back Panel

- 3/4" thick UV coated birch/maple plywood.

4 Shelving

- 3/4" thick UV coated birch/maple plywood. Edge-banding on front edge to match cabinet interior color. Shelves are adjustable and sit on 100% metal shelf pins.
- Half-depth, adjustable shelves standard on base cabinets.

5 Side Panels

- 3/4" thick UV coated birch/maple plywood face edge-banded to match door/drawer front. Bore, dowel and glue construction.

6 Stretchers/Mid-Rails

- 3/4" thick UV coated birch/maple plywood with face edge-banded to match door/drawer front. Bore, dowel and glue construction. Stretcher/mid-rail installed beneath every drawer.

7 Toe Kick

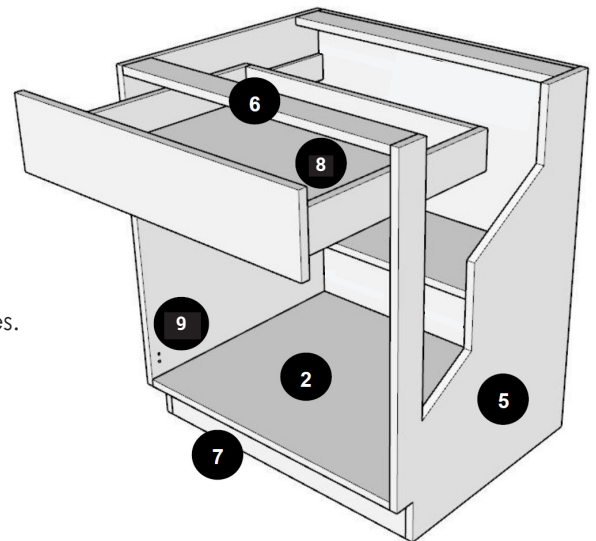
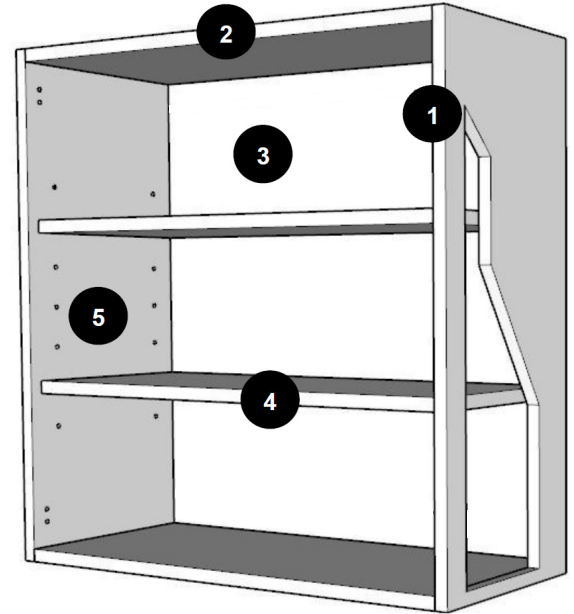
- 4 1/2" high x 3/4" thick UV coated plywood. Bore, dowel and glue fastening into side panels

8 Drawer Box

- 5/8" thick coated, solid wood, dovetail drawer box.
- 1/4" thick fully captured bottom.
- Drawers in cabinets 24" and wider get 1/2" thick center support on bottom of drawer
- Soft-close, 7/8 extension standard undermount, 75 lb. drawer guides.

9 Hinges

- Soft-close 110-degree opening, fully concealed hinges. Hinges are 6-way adjustable clip on style.
- Hinges and mounting plates are constructed of steel.





RiverRun™ C A B I N E T R Y



PRICE GROUP

Price Group 1

PARKVIEW SLAB (MDF & MAPLE)

Price Group 2

CAMBRIDGE SLAB

JEFFERSON SLAB (MDF)

PARKVIEW 5PC (MDF & MAPLE)

Price Group 3

CAMBRIDGE 5PC

JEFFERSON SLAB (RED OAK)

JEFFERSON 5PC (MDF)

Price Group 4

DALTON SLAB (BRICH)

JEFFERSON 5PC (OAK)

Price Group 5

DALTON 5PC (BIRCH)

HAMPTON 5PC (MDF)



DIRECT
SUPPLY INC
SURFACE MATERIALS \ CABINETS \ HARDWARE

616-245-4415

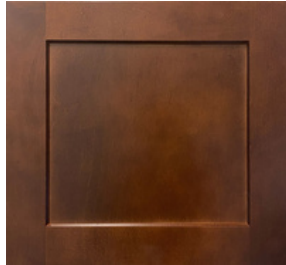
www.directsupplyinc.com | sales@directsupplyinc.com

Parkview Slab

RiverRock



Cocoa



Smoke



Sahara



Pecan



Sage



Mint



Pewter



STAINS WOOD SPECIES: SOFT MAPLE

PAINTS WOOD SPECIES: MDF

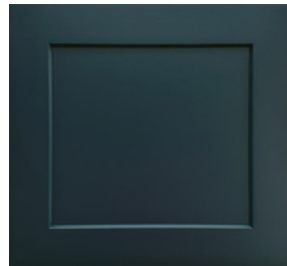
Parkview 5pc

***Image
Coming
Soon

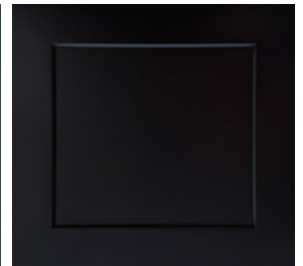
Linen



Blue Lagoon



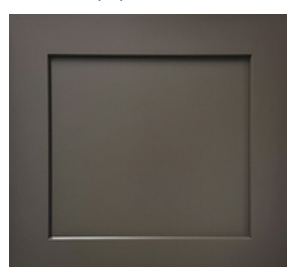
Onyx



White



Peppercorn



STAINS WOOD SPECIES: SOFT MAPLE

PAINTS WOOD SPECIES: MDF



DIRECT
SUPPLY INC
SURFACE MATERIALS \ CABINETS \ HARDWARE

616-245-4415

*Color may vary see samples
25

www.directsupplyinc.com | sales@directsupplyinc.com

Cambridge 5pc

Cambridge Slab

Onyx



WOOD SPECIES: MDF

Pewter



WOOD SPECIES: MDF

Blue Lagoon



Linen



Mint



Sage



White



Peppercorn



Jefferson



Peppercorn

STAINS & PAINTS
WOOD SPECIES: RED OAK



Onyx



Blue Lagoon



White



Mint



Linen



Pewter



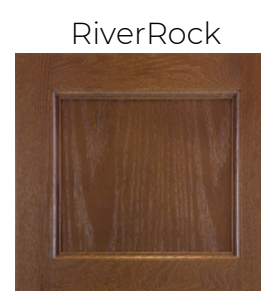
Sage



Pecan



Cocoa



RiverRock



Sahara



Smoke



Onyx

PAINTS ONLY
WOOD SPECIES: MDF



White



Pewter



Mint



Peppercorn



Linen



Sage



Blue Lagoon



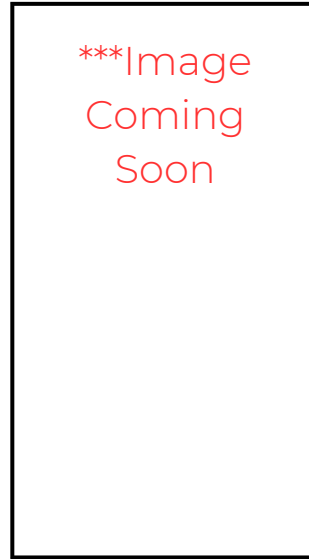
Dalton 5pc

Pecan



WOOD SPECIES: BIRCH

Dalton Slab

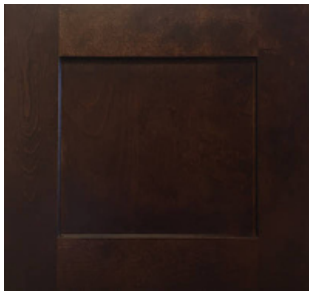


WOOD SPECIES: BIRCH

Smoke



Cocoa



Sahara



Smoke



Hampton

Peppercorn



WOOD SPECIES: MDF

White



Mint



Pewter



Blue Lagoon



Sage



Onyx



Linen



FINISH

River Run uses deep, luxurious, and durable finishes to enhance the door's details. Additionally, all the finishes have anti-yellowing properties, keeping the cabinet surface looking great for years to come

CONSTRUCTION

1. Constructed from 3/4" hardwoods. Base and wall frames have 1 1/2" stiles and rails. Base cabinets have a 1" reveal at the top. Bottom and sides have 1/4" reveal.
2. Constructed from 1/2" plywood with option for finished ends. Ends, tops and bottoms are captured in frame grooves. Backs are captured in end panel grooves.
3. For ease of installation, the backs are solid 1/2" plywood. Base cabinet backs extend to the floor providing optional structural stability.
4. EuroBoxes are 5/8" thick hardwood plywood with dowel construction. Option to upgrade to dovetail construction. Both options are clear coated and bottoms are fully captured plywood. Glides are under mount, full extension soft-close.

5. Sealed with clear-coat finish. Finished Interior option may be selected on wall, base, and tall cabinets up to 24" deep.

*Dovetail is available with upgrade

6. EuroBox (standard) or dovetail upgrade option for roll out tray box with undermount glides. Pilasters are installed at each corner of base cabinet (pantries get 2 sets of pilaster kits) with slots for approximate 1" height adjustments.

7. 6-way fully concealed 108° self-closing cup hinges that allow easy height, width, and depth adjustment are standard.

8. Premium full overlay door styles with soft-close door hinges. Stained doors are solid hardwood and painted doors are MDF.

9. Constructed from 1/2" unfinished plywood. They are inset into the cabinet box 3 1/2" and are 4 1/2" high. Toe Kick Material (TKS) is required to finish the toe kick space.





WOLF HOME PRODUCTS™

BUILDERS MARKTM

FROM **WOLF** HOME PRODUCTS[®]



TEMPO SERIES



SAWYER
White Paint



SAWYER
Pewter Paint



SAWYER
Grey Stain



SAWYER
Dark Sable Stain

BUILDERS MARK™

FROM WOLF HOME PRODUCTS®

Introducing Builders Mark Tempo

A return to the rhythm of quality and consistency. True to its name, Builders Mark cabinets offer ample design opportunities at an extremely affordable price point. The Sawyer door style in four popular finish options is our renewed commitment to bringing you pocket-friendly style that you can trust.

Standard overlay mortise and tenon door

Paint — HDF drawer front and door with recessed MDF center panel

Stain — Maple drawer front and door with recessed veneer center panel

3/8" furniture board sides, top and bottom

1/2" bullnosed MDF shelves

MDF drawer box with dovetail joinery

Side-mounted epoxy drawer guides

Six-way adjustable, self-close hinges

Hidden furniture board hanging rails top and bottom



WOLF HOME PRODUCTS®

C A B I N E T R Y

BUILDERS MARK™
FROM **WOLF** HOME PRODUCTS®

VERO SERIES

THE BUDGET-FRIENDLY CHOICE FOR SPACES BIG AND SMALL

True to its name, Builders Mark™ cabinets offer designers, contractors, and builders ample design opportunities at an extremely affordable price point. The Vero series — a collection of two door styles with three popular finishes — offers you more options to give any size project some added style and increased durability.



SHEA DOOR STYLE



SLOANE DOOR STYLE



Pearl SmartShield™ Cinder SmartShield™



Mocha Stain

CABINET FEATURES

- » Standard overlay mortise and tenon, flat panel door
- » 3/8" industrial-grade furniture board sides on base, wall and vanity cabinets, 1/2" sides on tall cabinets
- » Solid hardwood face frame, pocket screw joinery construction
- » 1/2" industrial-grade furniture board drawers
- » 3/4" extension side-mounted epoxy drawer guides
- » Six-way adjustable, fully concealed hinges
- » Durable finish resists scratches, dents and dings
- » Easy-clean interior

SMARTSHIELD™ TECHNOLOGY

Cleanups are covered with SmartShield™ Technology. Our Shea door style features an ultra-durable finish that stands up to wear and tear, resists household stains and wipes clean every time. The beauty and consistency of SmartShield Technology gives you a clean, contemporary style with added durability.

■ STYLE

High fashion look with smooth, even color consistency and a quality finish that has a warm, sleek feel when compared to other similar products.

■ CONSISTENCY

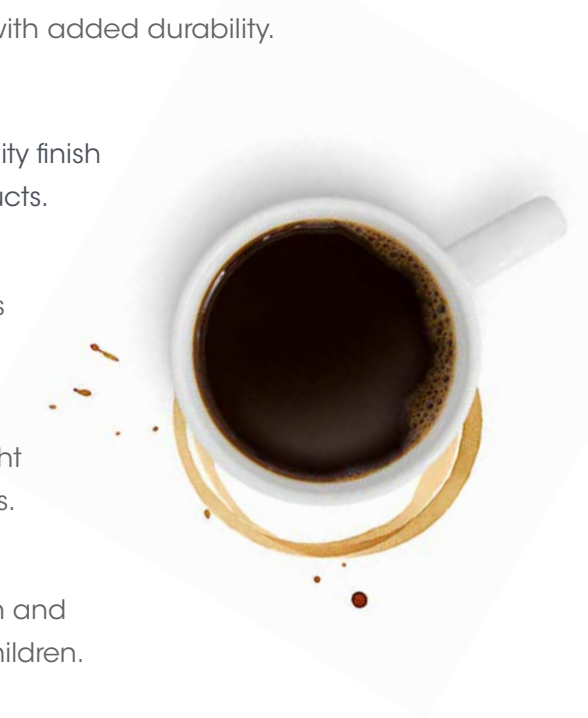
360 degrees of crisp, consistent beauty with no wood grain issues or finish variations. You get a smooth, consistent finish every time.

■ DURABILITY

No roughness, peeling, cracking and open joints. The effects of light exposure and aging are minimal in comparison to wood products.

■ EASY TO CARE FOR

Resists moisture and common household stains. A breeze to clean and makes an excellent choice for homeowners with pets or young children.



CABINET CONSTRUCTION

DRAWER GLIDES

Side-mounted, epoxy coated nylon roller glides

SHELVES

1/2" furniture board, adjustable

BACKS

Base & tall cabinets, 1/4" furniture board
Wall Cabinets, 3/8" furniture board

END PANELS

Wall and base cabinets 3/8" furniture board
Tall Cabinets 1/2" furniture board

FACE FRAMES

Solid wood, 1 1/2" wide, 3/4" thick

DRAWER BOX

1/2" furniture board, butt joint and stapled

HINGES

6-way adjustable, fully concealed, self-close



BOTTOMS

Wall and base cabinets 3/8" furniture board
Tall Cabinets 1/2" furniture board

WOLF CLASSIC™



WOLF HOME PRODUCTS®

CABINETS

WOLF CLASSIC™

WOLF CLASSIC™

CLASSIC QUALITY FOR EVERY VISION AND BUDGET.

With nine popular door styles, carefully curated finishes and more, Wolf Classic™ makes it easy to find the right cabinetry for every project and stay within your budget. Enjoy extra design flexibility with our Personalized Solutions program — modify cabinets, add storage solutions and choose popular colors to make a customized design statement in your home.

All Wolf Classic cabinets are hand-crafted, combining generations of woodworking expertise with today's latest manufacturing technologies. Solid hardwood components and a state-of-the-art finishing system produce a consistently beautiful and long-lasting appearance. With Wolf Classic, you're assured of the ideal combination of quality and value.

On cover:
GRANTLEY WHITE PAINT

DARTMOUTH MIDNIGHT PAINT



WOLF CLASSIC STYLES

DARTMOUTH



White Paint Pewter Paint Grey Stain Hazelnut Stain Honey Stain Dark Sable Stain Brownstone Stain

DARTMOUTH 5-PIECE



White Paint Pewter Paint Hazelnut Stain Grey Stain

BERWYN



Opal Paint

YORK



White Paint Grey Stain

WAVERLY



Hazelnut Stain White Paint

HANOVER



White Paint Grey Stain

CAMERON



Diamond Paint Shale Paint

GRANTLEY



White Paint Pewter Paint

GROVE



Opal Paint
(coming soon)

WOLF CLASSIC FEATURES

Classic style and practical storage make your dream a reality. Enjoy affordable, high-quality Wolf Classic cabinets with the peace of mind of our industry-leading 5-Year Warranty.

- » 1/2" plywood sides
- » Solid wood dovetail drawers
- » 3/4" adjustable plywood shelves
- » Soft-close doors
- » Soft-close drawers
- » Special Order offering
- » ADA-compliant cabinets
- » Special Order truckload colors & construction



DARTMOUTH/DARTMOUTH 5-PIECE
BISCAYNE, PALMETTO & WHITE PAINT

WOLF CLASSIC™ COMPLEMENTS*

Kitchen or bath. Mud room or game room. Home library or studio. Personalize any space with 14 complementary accent colors for base cabinets, islands, vanities and more. See page 25 to learn more.



14
ACCENT
COLORS

GOOD LOOKS GO GREAT ANYWHERE.

A blank slate can be a wonderful thing. With our Dartmouth cabinets, you can give any space a clean, contemporary look. Modern Shaker-style doors make the perfect canvas for your hardware and accessory choices. Available in five different stains and two popular paints, Dartmouth cabinets are as adaptable as they are good-looking.



Honey Stain Grey Stain Dark Sable Stain Brownstone Stain



Hazelnut Stain Pewter Paint White Paint



Also available in 14 special order finishes. See page 25 to learn more about **WOLF CLASSIC™** COMPLEMENTS.

DARTMOUTH HAZELNUT STAIN



DARTMOUTH WHITE PAINT



FEATURES

- » Full overlay mortise and tenon door
- » Paint — HDF door and drawer front with recessed MDF center panel
- » Stain — Maple door and drawer front with recessed veneer center panel
- » 1/2" plywood sides, back, top and bottom
- » All wood corner blocks
- » 3/4" bullnosed adjustable plywood shelves
- » Solid wood dovetail drawer construction
- » Full-extension undermount drawer glides with soft-close mechanism
- » Hidden, six-way adjustable hinges with soft-close mechanism
- » Hidden plywood hanging rails top and bottom



DARTMOUTH PEWTER PAINT



DARTMOUTH/DARTMOUTH 5-PIECE
PEWTER PAINT



DARTMOUTH/DARTMOUTH 5-PIECE
LAUREL & WHITE PAINT

DARTMOUTH 5-PIECE

THAT LITTLE SOMETHING EXTRA.

The popular and contemporary Dartmouth style offers a little added flair with 5-piece drawer fronts. Available in two different stains and two popular paints, these doors and drawers are sure to bring class and distinction to any room in your home.



White Paint

Pewter Paint

Grey Stain

Hazelnut Stain



Also available in 14 special order finishes. See page 25 to learn more about **WOLF CLASSIC™** COMPLEMENTS.

FEATURES

- » Full overlay mortise and tenon door
- » Paint — HDF door and five-piece drawer front with recessed MDF center panel
- » Stain — Maple door and five-piece drawer front with recessed veneer center panel
- » ½" plywood sides, back, top and bottom
- » All wood corner blocks
- » ¾" bullnosed adjustable plywood shelves
- » Solid wood dovetail drawer construction
- » Full-extension undermount drawer glides with soft-close mechanism
- » Hidden, six-way adjustable hinges with soft-close mechanism
- » Hidden plywood hanging rails top and bottom

NEUTRAL TONE, NATURAL STYLE.

Berwyn combines tradition and elegance. This full overlay door is available exclusively in our Opal Paint, which combines the warmth of white with cool grey undertones.



Opal Paint

FEATURES

- » Full overlay mitered door
- » Maple door with recessed MDF center panel
- » Maple five-piece drawer front with recessed MDF center panel
- » 1/2" plywood sides, back, top and bottom
- » All wood corner blocks
- » 3/4" bullnosed adjustable plywood shelves
- » Solid wood dovetail drawer construction
- » Full-extension undermount drawer glides with soft-close mechanism
- » Hidden, six-way adjustable hinges with soft-close mechanism
- » Hidden plywood hanging rails top and bottom





YORK STONYBROOK PAINT



YORK WHITE PAINT



YORK BAYSIDE & WHITE PAINT

YORK

VERSATILITY THAT'S JUST YOUR STYLE.

With clean lines and a classic look, York cabinets are a homeowner's dream. Available in a paint and stain finish, York cabinets make the perfect match for any design. Versatile, yes, but with enough detail to elevate the style of your space.



White Paint

Grey Stain



Also available in 14 special order finishes. See page 25 to learn more about **WOLF CLASSIC™ COMPLEMENTS**.

FEATURES

- » Full overlay mortise and tenon door
- » Paint — HDF door and five-piece drawer front with recessed MDF center panel
- » Stain — Maple door and five-piece drawer front with recessed veneer center panel
- » 1/2" plywood sides, back, top and bottom
- » All wood corner blocks
- » 3/4" bullnosed adjustable plywood shelves
- » Solid wood dovetail drawer construction
- » Full-extension undermount drawer glides with soft-close mechanism
- » Hidden, six-way adjustable hinges with soft-close mechanism
- » Hidden plywood hanging rails top and bottom

LESS OFFERS SO MUCH MORE.

A slimmer profile and narrower side stiles give new Waverly cabinets just enough of the shaker tradition, but with a touch of elegance and simplicity that elevates the timeless style. Available in White Paint or Hazelnut Stain.



White Paint Hazelnut Stain



Also available in 14 special order finishes. See page 25 to learn more about **WOLF CLASSIC™** COMPLEMENTS.

FEATURES

- » Full overlay mortise and tenon door
- » Paint — HDF door and drawer front with recessed MDF center panel
- » Stain — Maple door and drawer front with recessed veneer center panel
- » 1/2" plywood sides, back, top and bottom
- » All wood corner blocks
- » 3/4" bullnosed adjustable plywood shelves
- » Solid wood dovetail drawer construction
- » Full-extension undermount drawer glides with soft-close mechanism
- » Hidden, six-way adjustable hinges with soft-close mechanism
- » Hidden plywood hanging rails top and bottom



WAVERLY WHITE PAINT



WAVERLY WHITE PAINT



WAVERLY HAZELNUT STAIN



HANOVER BAYSIDE & WHITE PAINT



HANOVER GREY STAIN



HANOVER WHITE PAINT

HANOVER

VALUE THAT'S RICH IN CHARACTER.

Hanover is a refreshing style that will complement any design aesthetic. Available in our classic White Paint or popular Grey Stain, this transitional choice is simultaneously understated and loaded with character.



White Paint

Grey Stain



Also available in 14 special order finishes. See page 25 to learn more about **WOLF CLASSIC™** COMPLEMENTS.

FEATURES

- » Standard overlay mortise and tenon door
- » Paint — HDF door and drawer front with recessed MDF center panel
- » Stain — Maple door and drawer front with recessed veneer center panel
- » 1/2" plywood sides, back, top and bottom
- » All wood corner blocks
- » 3/4" bullnosed adjustable plywood shelves
- » Solid wood dovetail drawer construction
- » Full-extension undermount drawer glides with soft-close mechanism
- » Hidden, six-way adjustable hinges with soft-close mechanism
- » Hidden plywood hanging rails top and bottom

FINISH WITH A FLAIR.

Start with a beautiful new finish and see how a practical, 5-piece shaker drawer front can be transformed into something spectacular to behold. That's the new beauty of Cameron cabinets.



Diamond Paint



Shale Paint

FEATURES

- » Full overlay mortise and tenon door
- » HDF door and drawer front with recessed HDF center panel
- » 1/2" plywood sides, back, top and bottom
- » All wood corner blocks
- » 3/4" bullnosed adjustable plywood shelves
- » Solid wood dovetail drawer construction
- » Full-extension undermount drawer glides with soft-close mechanism
- » Hidden, six-way adjustable hinges with soft-close mechanism
- » Hidden plywood hanging rails top and bottom



CAMERON DIAMOND PAINT



CAMERON SHALE PAINT



CAMERON DIAMOND PAINT

A CLASSIC FOR ANY OCCASION.

A recessed panel door with a clean design that works with any style. The perfect backdrop to any aesthetic, Grantley is both neutral and versatile.



White Paint

Pewter Paint



Also available in 14 special order finishes. See page 25 to learn more about **WOLF CLASSIC™** COMPLEMENTS.

FEATURES

- » Standard overlay mortise and tenon door
- » HDF door with recessed MDF center panel
- » HDF slab drawer front
- » ½" plywood sides, back, top and bottom
- » All wood corner blocks
- » ¾" bullnosed adjustable plywood shelves
- » Solid wood dovetail drawer construction
- » Full-extension undermount drawer glides with soft-close mechanism
- » Concealed, six-way adjustable hinges with soft-close mechanism
- » Plywood hanging rails top and bottom

GRANTLEY
MIDNIGHT & WHITE PAINT

GRANTLEY WHITE PAINT

THE WONDER OF WHITE.

In our new Grove cabinets, warm, off-white hues take on a wondrous light with a superior finish quality that's stunning in any setting.



Opal Paint

FEATURES

- » Full overlay mortise and tenon door
- » HDF door and five-piece drawer front with recessed MDF center panel
- » ½" plywood sides, back, top and bottom
- » All wood corner blocks
- » ¾" bullnosed adjustable plywood shelves
- » Solid wood dovetail drawer construction
- » Full-extension undermount drawer glides with soft-close mechanism
- » Hidden, six-way adjustable hinges with soft-close mechanism
- » Hidden plywood hanging rails top and bottom



PERSONALIZED SOLUTIONS. THINKING OUTSIDE THE BOX.

It's your space...your vision. Bring them together affordably with Personalized Solutions from Wolf Classic™ cabinets. Personalized Solutions lets you modify many of our popular Wolf Classic cabinets to fit your one-of-a-kind style.

With this program, Wolf Classic becomes a complete cabinetry solution – so not only can you make a customized design statement, but you'll also enjoy extra design flexibility, easily accommodate the character of your space and incorporate the latest trends in vibrant colors – all in a fraction of the time. Just think outside the box.



Tip Out Tray
BERWYN OPAL PAINT



HANOVER LAUREL & JUNIPER PAINT

Personalized Solutions gives you more design flexibility with Wolf Classic cabinets so you can:

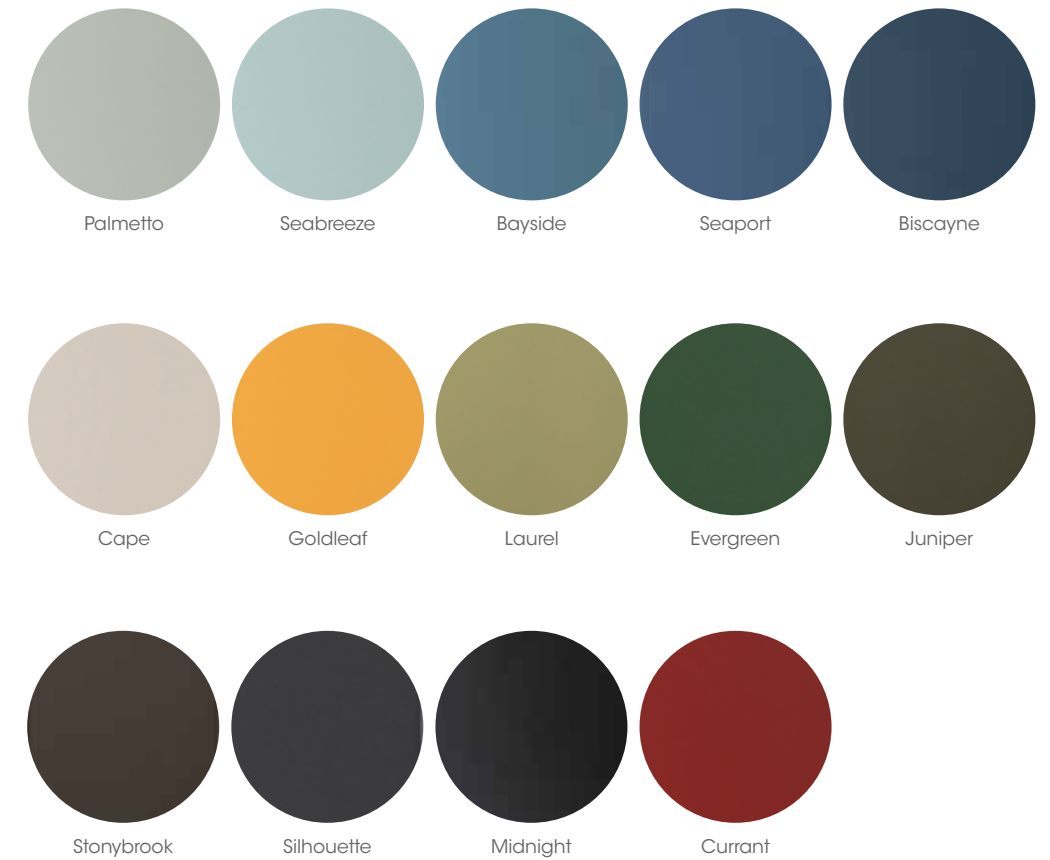
- **Modify cabinets** with more design options to meet the needs of your space and satisfy your unique style
- **Add storage solutions**, like pull-out organizers and tip-out trays, pre-installed, which ensures more precise and time-saving installation
- **Select trending colors** and color combinations through a wider variety of complementary paints, letting you add even more creative flair



MIXING. MATCHING. EYE-CATCHING.

Add your unique style to any space. Thanks to Wolf Classic Complements, you can personalize it with accent colors for base cabinets, islands, vanities and more. They're the perfect complement to our most popular Wolf Classic styles and colors and are a surefire way to draw plenty of compliments, too.

WOLF CLASSIC™ COMPLEMENTS*



*Not available with Berwyn, Cameron or Grove door styles.

STORAGE SOLUTIONS. A PLACE FOR EVERYTHING.

When designing Wolf Classic cabinets, we had both form and function in mind. From food storage to recycling, these simple solutions will make your space work hard for you.



Cutlery Insert
HANOVER
WHITE PAINT



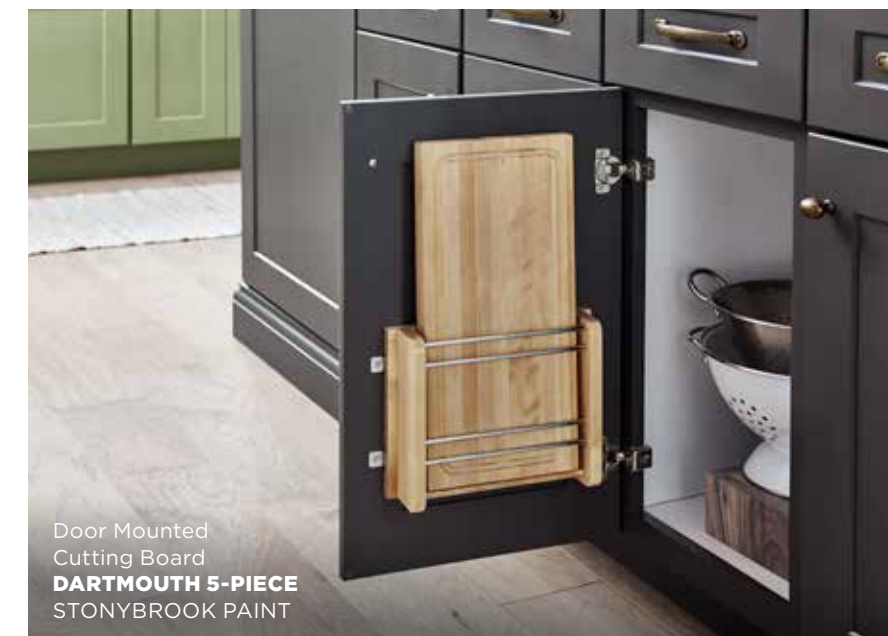
Lazy Susan Upgrade
DARTMOUTH WHITE PAINT



Peg Organization System
DARTMOUTH WHITE PAINT



Food Storage Organizer
HANOVER GREY STAIN



Door Mounted
Cutting Board
DARTMOUTH 5-PIECE
STONYBROOK PAINT



Spice Drawer Insert
DARTMOUTH WHITE PAINT



Waste Container Storage
HANOVER GREY STAIN



Base Corner Lazy Susan
DARTMOUTH 5-PIECE PEWTER PAINT



Sink Base Caddy
HANOVER GREY STAIN



Knife Block Insert
DARTMOUTH 5-PIECE STONYBROOK PAINT



Pull Out Organizer
BERWYN OPAL PAINT



Pull Out Shelves
DARTMOUTH WHITE PAINT



Pot & Pan Organizer
DARTMOUTH WHITE PAINT



ALL ABOUT THE WAY YOU LIVE.

There's something about Wolf Classic™ cabinets that has you written all over them. Stylish, for sure. Built with character. Adaptable to a tee. And appreciative of a solid value. Sound like someone you know? You'll find the exceptional beauty and handcrafted quality of Wolf Classic cabinets are a perfect match with the way you live.

WOLF ENDURANCE™



WOLF HOME PRODUCTS®

OUTDOOR
CABINETRY

WOLF ENDURANCE



TOUGH PERFORMANCE THAT'S EASY ON YOU

Wolf Endurance is sturdy aluminum cabinetry for demanding areas, such as decks, patios, garages and mudrooms. The powder-coated finish and sealed storage will withstand the elements, even in coastal regions. Plus, Wolf Endurance is easy to configure, handle and install, and the price is easy on your wallet. So go ahead, make your great outdoors even greater with Wolf Endurance.



ALUMINUM CONSTRUCTION

Durable construction at a cost substantially less than stainless steel.



EASY TO CONFIGURE & INSTALL

Virtually unlimited configurations with freestanding cabinets, hardscape inserts and wall hung cabinets provide homeowners the freedom to utilize Endurance cabinets in almost any setting, indoors or out.



FULLY ASSEMBLED

Freestanding cabinets, hardscape inserts and wall hung cabinets are ready to use right away.



SEALED STORAGE

All doors and drawers are sealed with an EPDM D-Seal to insure a weather resistant interior.



POWDER-COATED FINISH

Exposed exterior surfaces are coated with a super-durable, architectural grade polyester powder coating, featuring high quality exterior grade pigments, providing weathering properties that follow AAMA 2604 requirements.

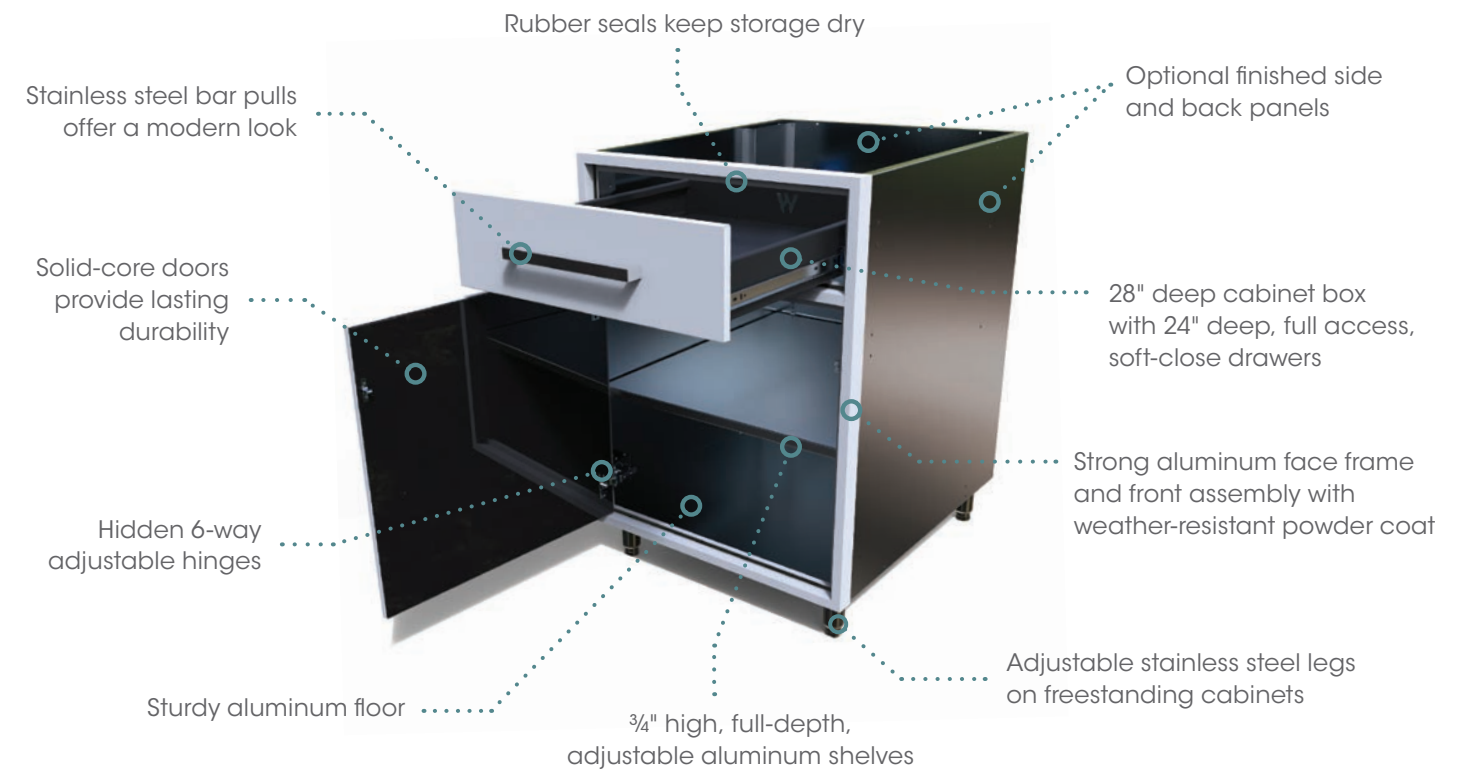


LIGHTWEIGHT

Easy to handle and install.



CONSTRUCTION FEATURES



WOLF ENDURANCE CABINETS ARE MADE FROM MORE THAN **25% RECYCLED MATERIALS**

DOOR STYLES

Personalize your Wolf Endurance cabinets with two door styles that complement any outdoor decor. Our Flat panel style is a classic slab door. For added flair, choose our Shaker door style. Both are available in three finishes and feature solid-core construction for durability.

FLAT DOOR STYLE

- Flat panel drawer front
- Slab door
- Inset door and drawer front create flush surface when they are fully closed
- Hardware included
- Available in three finishes
- Select cabinets available for Quick Ship delivery



White Ash Black

SHAKER DOOR STYLE

- Flat panel drawer front
- Flat center door panel
- Inset door and drawer front create flush surface when they are fully closed
- Hardware included
- Available in three finishes
- Available special order only

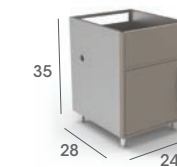


White Ash Black

QUICK SHIP CABINETS

 AVAILABLE FOR DELIVERY IN DAYS, NOT WEEKS.

These Wolf Endurance cabinets and accessories are in stock and ready to ship today with our **exclusive Quick Ship delivery**. Quick Ship—which delivers in days, not weeks—applies only to the Wolf Endurance cabinets below in our Flat door style in all three colors: Black, White and Ash. So, mix and match these sturdy, functional aluminum cabinets to complete your outdoor oasis or create a unique outdoor storage solution, and get it all delivered fast.



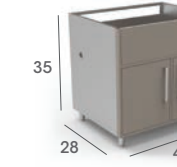
GAS GRILL BASE
Width: 24"
(GGBV24L)



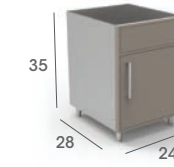
BASE, FOUR DRAWERS
Width: 24"
(DB24)



FINISHED SIDE PANEL
(FSP31)



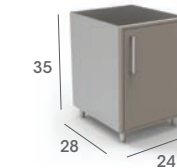
GAS GRILL BASE
Width: 42"
(GGBV42)



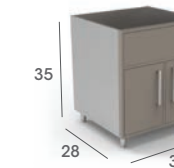
SINK BASE
Width: 24"
(SB24L, SB24R)



FINISHED BACK PANEL
(Solid or Vented)



BASE, FULL HEIGHT DOOR
Width: 24"
(B24FHL, B24FHR)



SINK BASE
Width: 36"
(SB36)



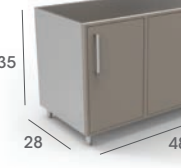
MOBILE BASE
Widths: 48" and 72"
(MB48, MB72)



BASE, ONE DRAWER
Width: 18"
(B18L, B18R)



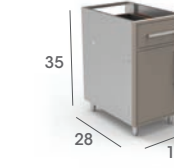
BASE WASTE BASKET
Width: 24"
(BWB24)



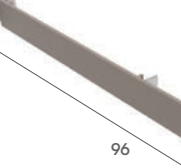
BASE CORNER
Width: 48"
(BC48L, BC48R)



BASE, ONE DRAWER
Width: 24"
(B24L, B24R)



PROPANE BASE
Width: 18"
(PPBV18L)



ADJUSTABLE TOEKICK
Width: 96"
(TOEKICKKIT)

HARDSCAPE INSERT CABINETS



TURN YOUR OUTDOOR AREA INTO THE ULTIMATE OASIS

Perfect for hardscape applications, these upscale insert cabinets are designed to be built into your stone, brick or stucco applications. Available as full enclosures or as door and frame only, Wolf Endurance hardscape insert cabinets provide the outdoor storage you need, fully assembled and ready to install.



FULL HEIGHT DOOR INSERT

- One full height door
- Full enclosure
- One adjustable full depth shelf
- Cut-out dimension: 16½" W x 27½" H
- Available width: 18" (B18FHLHI, B18FHRHI)



FULL HEIGHT DOOR INSERT

- Two full height doors
- Full enclosure
- One adjustable full depth shelf
- Cut-out dimension (36"): 34½" W x 27½" H
- Available widths: 36" and 40" (B36FHHI, B40FHHI)



DOOR AND FRAME

- One full height door (specify left or right hinge)
- Door and frame assembly only
- Cut-out dimension: 22½" W x 27½" H
- Available width: 24" (B24FHLFFHI, B24FHRFFHI)



UNDER GRILL DOOR AND FRAME

- Two full height doors
- Door and frame assembly only
- Cut-out dimension (36"): 34½" W x 27½" H
- Cut-out dimension (40"): 38½" W x 27½" H
- Available widths: 36" and 40" (B36FHFFHI, B40FHFFHI)



DOOR AND DRAWER INSERT

- One door, one drawer
- Full enclosure
- One adjustable full depth shelf
- Cut-out dimension: 22½" W x 27½" H
- Available width: 24" (B24LHI, B24RHI)



DOOR AND DRAWER INSERT

- Two doors, one drawer
- Full enclosure
- One adjustable full depth shelf
- Cut-out dimension: 34½" W x 27½" H
- Available width: 36" (B36HI)



DRAWER INSERT

- Full enclosure
- Cut-out dimension: 22½" W x 27½" H
- Available width: 24" (DB24HI)



PROPANE PULL-OUT INSERT - VENTED

- One full height door
- Full enclosure
- No shelf
- Pull-out hold standard LP tanks
- Vented through door
- Cut-out dimension: 16½" W x 27½" H
- Available width: 18" (PPBV18HI)



UNDER GRILL INSERT

- Two full height doors
- Full enclosure
- No shelf
- Cut-out dimension (36"): 34½" W x 16½" H
- Cut-out dimension (40"): 38½" W x 16½" H
- Available widths: 36" and 40" (GU36HI, GU40HI)

Hardscape insert cabinets are available in two styles and three finishes:

*Available special order only

FLAT



White

Ash

Black

SHAKER



White

Ash

Black



UNDER GRILL DOOR AND FRAME

- Two full height doors
- Door and frame assembly only
- Cut-out dimension: 34½" W x 16½" H
- Available width: 36" (GU36FFHI)



WASTE BIN PULL-OUT INSERT

- One full height door
- Full enclosure
- No shelf
- Pull-out includes waste bin
- Cut-out dimension: 16½" W x 27½" H
- Available width: 18" (BWB18HI)



PAPER TOWEL HOLDER

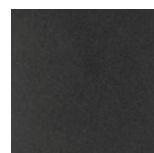
- One door, bottom hinge
- Full enclosure
- Includes paper towel holder
- Cut-out dimension: 14½" W x 9½" H
- Available width: 16" (BPT16HI)



ALUMINUM COUNTERTOPS

Complete your outdoor space with a beautiful and long-lasting aluminum countertop, designed and custom fabricated for your specific cabinet, appliance and sink layouts. Using the same exterior grade powder coating as our cabinets, these durable tops will withstand harsh outdoor environments, including salt air and water. They will not rust, corrode, swell, crack or warp and are highly resistant to scratching.

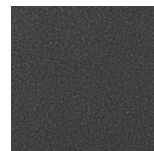
Endurance Aluminum Countertops are available in four all-weather finishes:



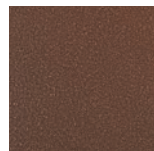
Textured Black



Walnut



Silver



Copper



OUTDOOR CABINET COMBINATIONS

Wolf Endurance Outdoor Cabinets are easily paired to create stunning designs with simple installation. **Need a little inspiration?** Create your own perfect combination, or borrow one of ours.

See pages 10 & 11 for a few ideas to get you started.

Endurance Outdoor Cabinets are available in three finishes:



White



Ash



Black



OUTDOOR CABINET COMBINATIONS

COURTYARD

96" W x 28" D

- (1) B24L
- (1) B24FHL
- (1) B24FHR
- (1) BWB24
- (2) FSP31



All Wolf Endurance cabinet combinations shown here are available with Wolf's exclusive Quick Ship delivery.

STAYCATION

84" W x 28" D

- (1) PPBV18L
- (1) GGBV42
- (1) BWB24
- (2) FSP31

For use with propane tank. For use with direct gas hookup, substitute B18L for PPBV18L



BISTRO

48" W x 28" D

- (1) BWB24
- (1) B24R
- Optional Mobile Cart: MB48



OASIS

108" W x 28" D

- (1) B24L
- (1) PPBV18L
- (1) GGBV42
- (1) BWB24
- (2) FSP31

For use with propane tank. For use with direct gas hookup, substitute B18L for PPBV18L



REGAL

108" W x 109" D

- (1) SB36
- (1) BWB24
- (1) BC48R
- (1) PPBV18L
- (1) GGBV42
- (1) B18R
- (2) FSP31
- (2) FP3

For use with propane tank. For use with direct gas hookup, substitute B18L for PPBV18L

CLASSIC

48" W x 28" D

- (1) B24FHL
- (1) B24FHR
- (1) MB48
- (2) FSP31
- Optional Mobile Cart: MB48



WEEKENDER

60" W x 28" D

- (1) PPBV18L
- (1) GGBV42
- (2) FSP31

For use with propane tank. For use with direct gas hookup, substitute B18L for PPBV18L



HAVEN

72" W x 28" D

- (1) B24FHL
- (1) DB24
- (1) B24FHR
- (2) FSP31
- Optional Mobile Cart: MB72



MOBILE BASE

Available in two sizes—add to any combination

- 48" – MB48
- 72" – MB72



ENTERTAINER

115" W x 90" D

- (1) PPBV18L
- (1) GGBV42
- (1) BWB24
- (1) BC48L
- (1) DB24
- (1) B18R
- (2) FP3
- (2) FSP31

For use with propane tank. For use with direct gas hookup, substitute B18L for PPBV18L

GRILLMASTER

132" W x 28" D (with 36" wide grill)

- (1) B24FHL
- (1) BWB24
- Freestanding Grill
- (1) B24L
- (1) B24FHR
- (2) FSP31





TRANSFORMING
HOMES FOR OVER

175
— YEARS —

Wolf Home Products® is an innovator in the building products industry. We've cultivated more than 175 years of business experience into a total satisfaction guarantee. With our vast inventory of kitchen and bath, outdoor living and building products, we deliver your orders in a fraction of the time and ensure you get unparalleled value — when and where you need it. Wolf stands behind our service because, above all, Wolf stands behind you.



Find us on Instagram @[wolfhomeproducts](https://www.instagram.com/wolfhomeproducts) for inspiration on your next project!



Kitchen & Bath



Outdoor Living



Building Products

[wolfhomeproducts.com](https://www.wolfhomeproducts.com) | © 2020 Wolf Home Products. All Rights Reserved.

All photos are representative of product. Please review an actual product sample with your dealer before making your final selection. Information contained within is subject to change without notice.



WOLF VANITY TOPS



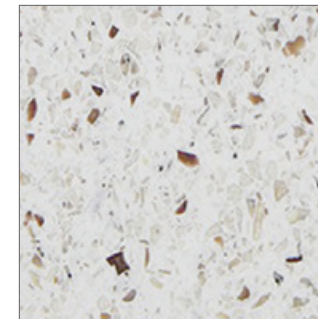
WOLF HOME PRODUCTS®

BATH

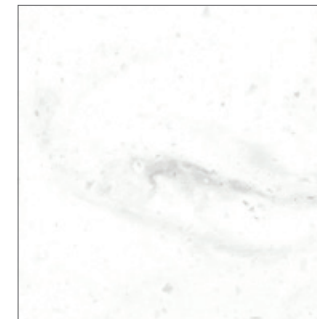
WOLF VANITY TOPS



COLORS



Alaskan Stone 4312



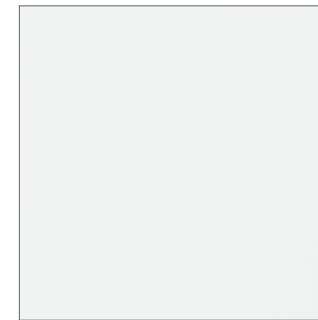
Aurora Bianco 0606



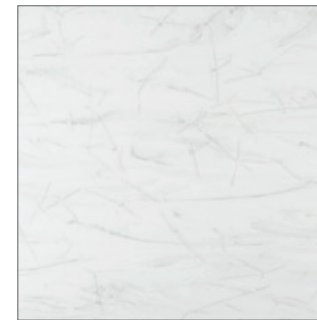
Aurora Grey 0608



Avalanche 7502



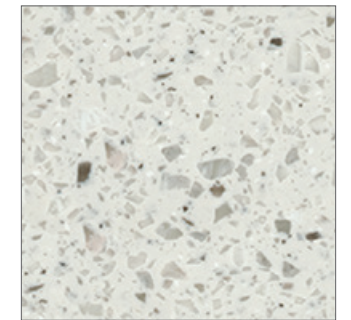
Bright White 1001



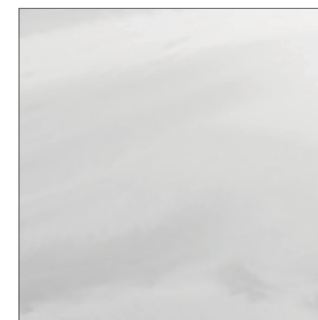
Carrara 6780



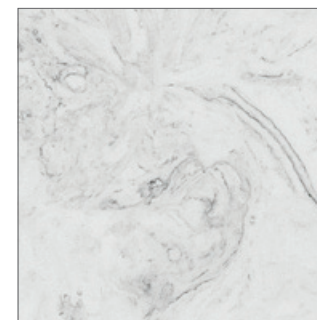
Coastline 4310



Geyser 0014



Mist 8512



Nuvola 6760



Oslo White 0012



Oxbow 8510

SOLID SURFACE

Solid Surface vanity tops are ultra contemporary, long-lasting and easy to maintain. The non-porous surface is moisture, bacteria and stain resistant and provides a seamless look, no matter how large the space. Even sinks can be joined right to the counter, eliminating every possible gap that leaves nowhere for moisture or mold to hide.

- Integral and undermount, rectangle or oval bowls available
- Wide variety of colors available
- Pre-drilled faucet holes with multiple configurations
- 1" thickness
- Decorative curves and bump-outs available

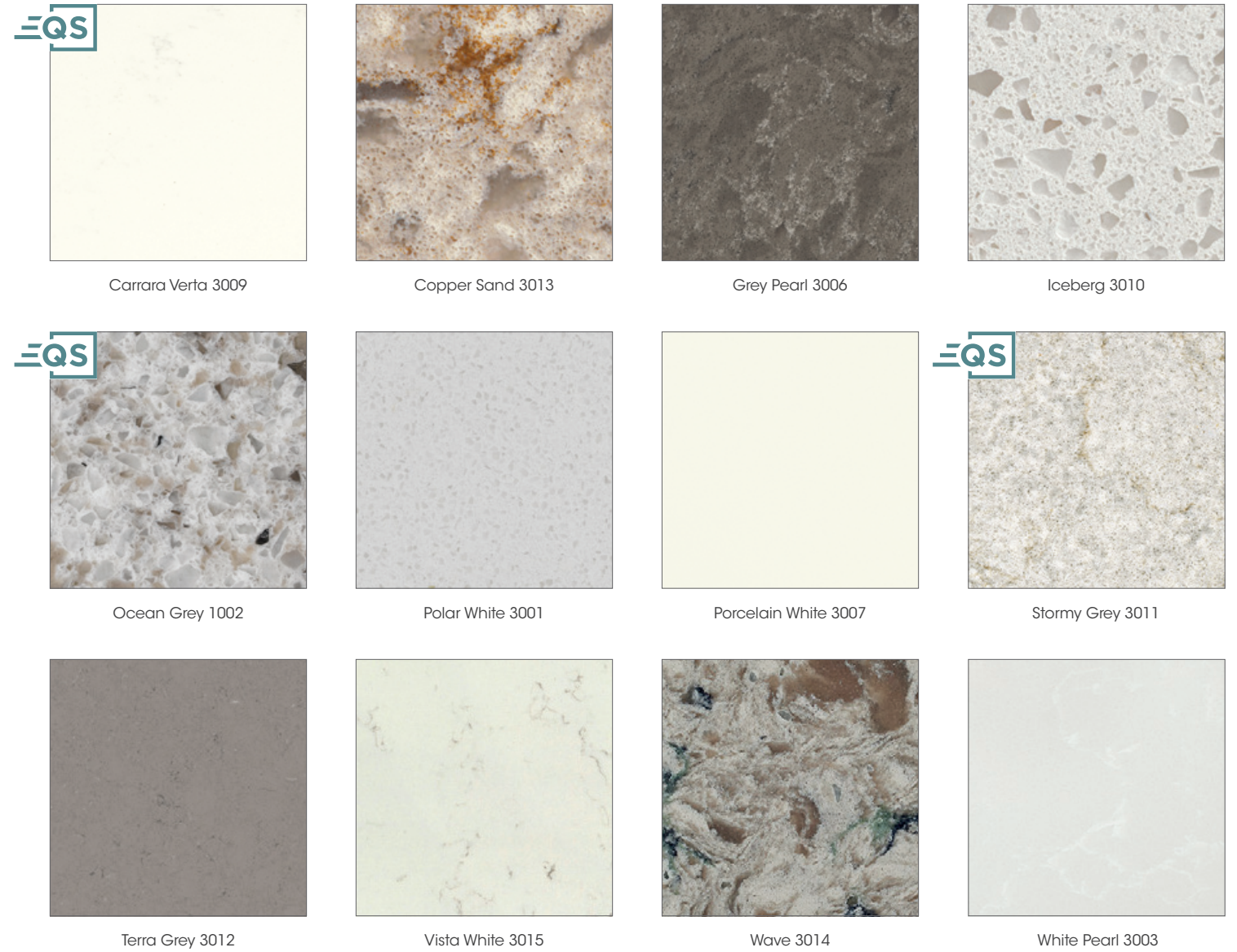
ON COVER:
Vanity: Wolf Classic™ Cabinets **DARTMOUTH** in LAUREL PAINT & BROWNSTONE STAIN
Vanity Top: **QUARTZ WHITE PEARL**



SEAMLESS SINK INSTALLATION STAYS BACTERIA-FREE AND IS EASY TO CLEAN.



COLORS



QUARTZ

Quartz is in demand because it offers the ideal combination of classic beauty and practicality. Resistant to stains and moisture, surprisingly affordable, extremely durable and easy to maintain, Engineered Quartz is created by mixing ground natural quartz with polymer resins for a finish that looks just like natural stone.

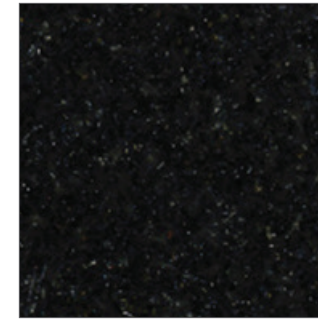
- Undermount rectangle or oval bowl installed
- Variety of bowl sizes and colors available
- Five decorative profile options
- Pre-drilled faucet holes with multiple configurations
- 3/4" thickness with a 1-1/4" thickness option
- Decorative curves and bump-outs available



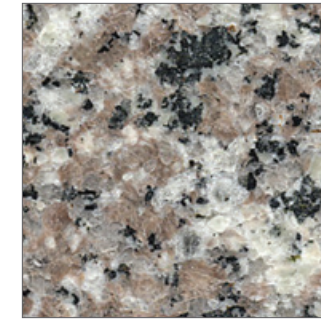
NATURAL GRANITE TIGER SKIN WHITE



COLORS



Absolute Black 952



Burlywood 901



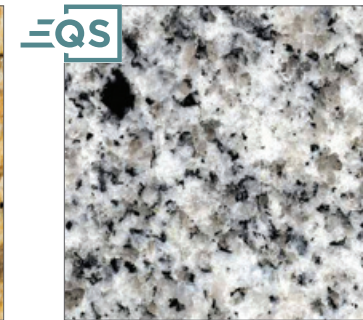
Elysian 9403



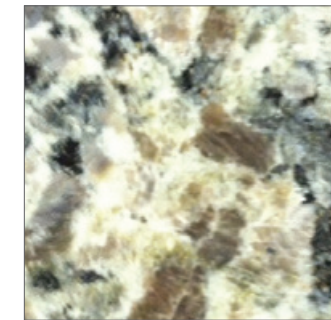
Luna Bai 9602



Marron Desert 9601



Meteorite 903



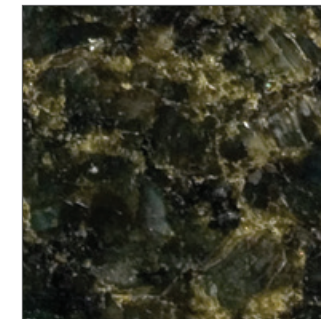
Rio Roca 9603



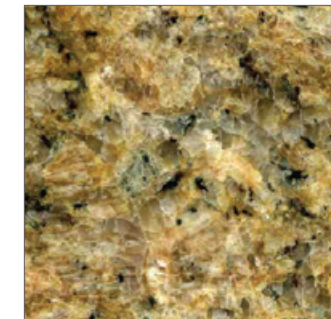
Sandstorm 9605



Tiger Skin White 904



Ubatuba 953



Venice Gold 9604



Wheat 902

NATURAL GRANITE

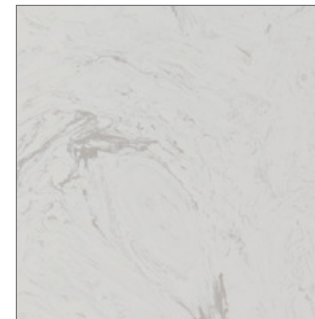
The hardest of all natural stone materials, Natural Granite fits any decor from classic to contemporary and resists stains, scratches and heat. Every piece is an original too, since the color and crystalline structure of granite vary depending on the amount and mix of natural elements it contains.

- Undermount rectangle or oval bowl installed
- Variety of bowl sizes and colors available
- Pre-drilled faucet holes with multiple configurations
- Five decorative profile options
- 3/4" thickness with a 1-1/4" thickness option
- Decorative curves and bump-outs available





COLORS



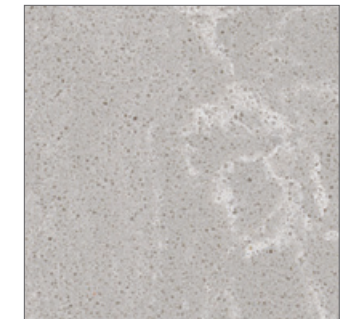
Blanco Silk 1001



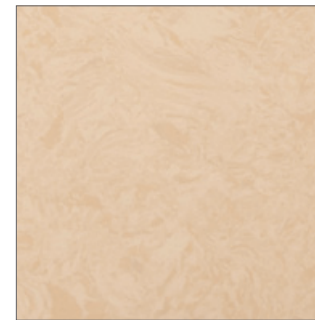
Canyon Mist 1002



Narock 1005



Silver Lining 1006



Villafranca 1003

ENGINEERED STONE

There's no need to sacrifice beauty for value when choosing a vanity top for your bath. Consider the advantages of Engineered Stone. Formulated from reclaimed natural marble, this exceptional material is "engineered" to be more resilient than cultured marble but with the traditional look and feel of natural stone—all at a fraction of the cost. Engineered Stone is durable, easy to care for, and resists heat, scratches and stains.

- Undermount rectangle or oval bowl installed
- Variety of bowl sizes and colors available
- Pre-drilled faucet holes with multiple configurations
- Five decorative profile options
- 5/8" thickness
- Decorative curves and bump-outs available





CULTURED MARBLE SILVER/WHITE

SPECIAL ORDER CULTURED MARBLE

Special order cultured marble tops combine smooth, seamless lines with first-quality construction. Available in a wide array of colors and finishes, these tops are customizable to fit any space and achieve just the custom look you want.

- Integral and undermount, rectangle or oval bowls available
- All-in-one design for easy cleaning
- Wear-resistant topcoat provides durability and lasting beauty
- Custom sizes and configurations
- Pre-drilled faucet holes with multiple configurations
- 3/4" thickness
- Antimicrobial Protection available

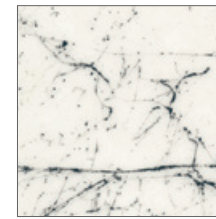


COLORS

MARBLEIZED FINISHES



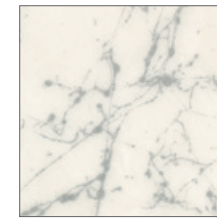
Beige/White 8



Charcoal Carrara C109



Concrete N102



Grey Carrara C104



Oyster White N101



Silver/White 4



White Carrara C103



White/Bone 18A

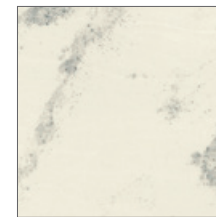


White/White 3

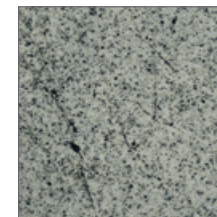
FAUX SPRAY GRANITE FINISHES



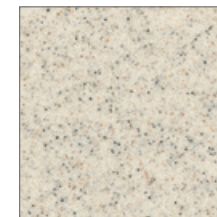
Calacatta Blanco 392



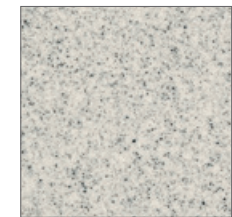
Calacatta Etna 391



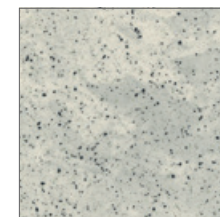
Caledonia Mist 381



Ecu 332



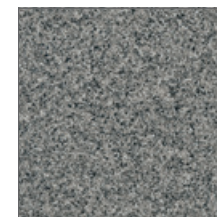
Fashion Grey 331



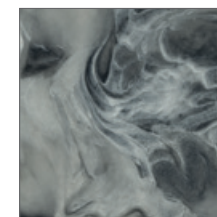
Kashmir Mist 382



Sand 323



Steel Grey 325



Tempest 9X



White Onyx 3X

SOLID FINISHES



Biscuit 1B^



Solid White 3B^

Allow approximately 2-3 weeks for delivery. Gloss finish is standard.
^These colors are also available in Satin finish with an upcharge.



CULTURED MARBLE CLOUD WHITE

EQS QUICK SHIP FOR FASTER DELIVERY



Cotton White 100



Cloud White 101



Linen 102



Cotton White 100



Cloud White 101



Linen 102

QUICK SHIP CULTURED MARBLE

Quick Ship Cultured Marble is attractive and cost-effective, making it a great choice for budget-conscious homeowners. This remarkable surface material is produced from limestone granules — the same mineral that forms natural marble.

Choose from three popular neutral colors to immediately enhance any traditional or modern bath decor.

- Integral recess oval or flush rectangle bowls available in popular standard sizes
- All-in-one design for easy cleaning
- Wear-resistant topcoat provides durability and lasting beauty
- Pre-drilled faucet holes
- 3/4" thickness



CULTURED MARBLE
Cotton White



QUARTZ CARRARA VERTA



NATURAL GRANITE ELYSIAN

ALL ABOUT THE WAY YOU LIVE.

Transform your bath into a space that's flawlessly functional, beautiful from any angle, and creatively yours. Nearly anything is possible with the palette of materials, finishes and colors available in Wolf vanity tops. From engineered stone to natural granite, classic styling or contemporary elegance, you can design a bath that fits your family's way of living—now and for years to come.



CULTURED MARBLE 69 CLOUD WHITE

WOLF SHOWERS



WOLF HOME PRODUCTS®

BATH

WOLF SHOWERS

ON COVER:

Shower Wall: **MARBLE** CARRERA THUNDER

Custom Shower Base: SOLID WHITE

Accessory: Luxury Tall Soap/Shampoo Shelf

CULTURED MARBLE. THE *NATURAL* CHOICE FOR A BEAUTIFUL SHOWER.

Cultured marble is a man-made, cast marble product that realistically mirrors the rich colors, veining and depth of detail of natural stone, but at a fraction of the cost. By skillfully integrating the latest technology in blending polymer resins with natural minerals, cultured marble from Wolf Home Products is a beautiful, durable product that offers exceptional flexibility in designing a shower that's perfect for you.

Advantages of cultured marble vs. tile shower

- **Carefree and durable** — seamless, grout-free finish with a non-porous surface resists stains and mildew and never needs sealing
- **Design flexibility and customization** — cast-in-mold fabrication allows custom, one-piece shapes for shower walls, bases, and accessories
- **Wolf Home Products 5-year limited warranty** — our craftsmanship and quality fabrication process offer you peace of mind

Shower Wall: **MARBLE** PAVESTONE
Custom Shower Base: **MARBLE** PAVESTONE
Accessory: Luxury Tall Soap/Shampoo Shelf
Vanity: Wolf Classic™ Cabinets **DARTMOUTH** WHITE PAINT
Vanity Top: **MARBLE** PAVESTONE


Shower Wall: **GRANITE RUSHMORE**
 Custom Shower Base: **SOLID WHITE**
 Accessory: Luxury Tall Corner Soap/Shampoo Shelf
 Vanity: Wolf Classic™ Cabinets **BERWYN OPAL PAINT**
 Vanity Top: **GRANITE RUSHMORE**



YOUR SHOWER. YOUR STYLE.

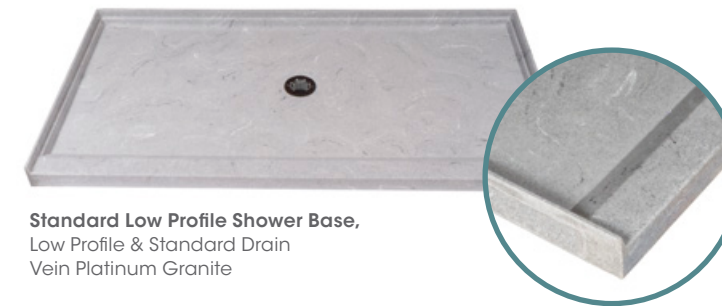
Wolf showers make your bath — new, refreshed or remodeled — a luxurious getaway. By selecting the wall panels and base in the color and size of your choice, you can piece together a beautiful shower that reflects your personal style. In addition to standard configurations, all panels and bases can be customized for length, depth and shape. You design it...we build it.

Ready to get started in choosing your shower design and options? Begin with the base configuration and “shop” from there.

Configuration		Dimension	Profile	Drain
 Square	STANDARD	Standard Sizes Only	<ul style="list-style-type: none"> • Standard Profile • Low Profile 	<ul style="list-style-type: none"> • Standard Drain • Trench Drain
 Rectangle				
 Corner	CUSTOM	Choose a Custom Size	<ul style="list-style-type: none"> • Standard Profile • Low Profile • Ramped Profile • None 	<ul style="list-style-type: none"> • Standard Drain • Trench Drain

SHOWER BASES

All shower bases come with a non-slip and pitched-to-drain floor and accept standard size drains. When designing a custom shower base, you specify the number and style of thresholds — regular 2" height, low-profile, higher or wider, or ramped. Custom options include wheelchair-accessible thresholds.



Standard Low Profile Shower Base,
 Low Profile & Standard Drain
 Vein Platinum Granite



Custom Shower Base, Standard Profile & Standard Drain
 Winter Pearl Granite



Standard Shower Base, Standard Profile & Standard Drain
 Classic White



Standard Corner Shower Base,
 Standard Profile & Standard Drain
 Solid Ice Grey



Custom Trench Drain, Low Profile & Trench Drain
 Carrara Thunder

SHOWER WALL PANELS

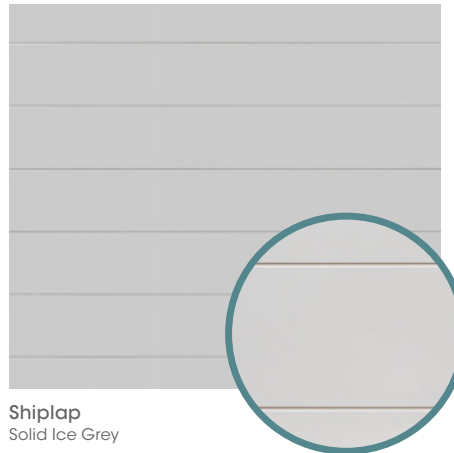
Choose a smooth cultured marble wall panel or a variety of designer tile patterns, including subway (with faux grout lines), shiplap and interlocking tile. Custom panels can be designed in any length, depth and shape, including angled and notched. Panel thicknesses are 3/8" and 3/4", depending on style and finish.



Smooth
Vein Storm Cloud



Traditional Tile
Carrara Thunder



Shiplap
Solid Ice Grey



Subway Tile
Solid White



Interlocking Tile
Pavestone

See additional color options on page 9.

Shower Wall: **GRANITE WHEAT**
Standard Shower Base: **GRANITE WHEAT**
Accessory: Shower Boutique (Recessed)
Vanity: Wolf Classic™ Cabinets **DARTMOUTH WHITE PAINT**
Vanity Top: **GRANITE WHEAT**



ACCESSORIES. THE PERFECT FINISH FOR ANY SHOWER.

Shower accessories are beautiful in form and practical in function. Crafted of cultured marble to match your design, they offer the ideal finishing touch to your shower.

All accessories shown in: **SOLID BISCUIT**



Luxury Tall
Corner Soap/
Shampoo Shelf



Luxury
Corner Soap/
Shampoo Shelf



Corner Soap Shelf



Shower Boutique
(Recessed)



Luxury Single Shelf
(Recessed)



Luxury Wide Single Shelf
(Recessed)



Luxury Soap/
Shampoo Shelf
(Recessed)



Luxury Slim Soap/
Shampoo Shelf
(Recessed)



Corner Seat



Luxury Tall Soap/
Shampoo Shelf
(Recessed)

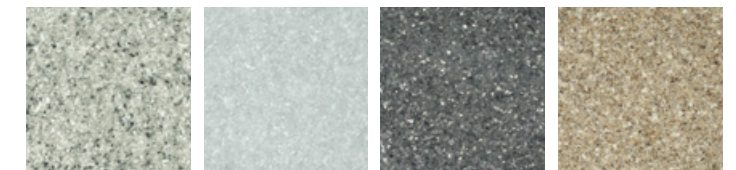
MATCH YOUR
STYLE WITH
AN ARRAY
OF COLORS.

Let your imagination wander through all the color possibilities for your new shower — from classic marble to veined granite to striking solids. Traditional or modern bath décor, our colors will enhance your vision.

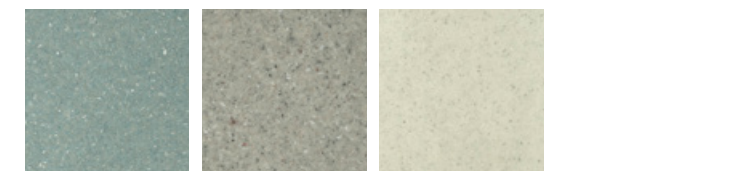
GRANITE



Platinum Café Sandcastle Winter Pearl

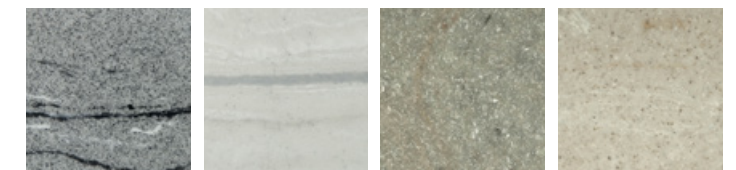


Rushmore Glacier Luna Pearl Wheat



Caribbean Dire Grey Storm Cloud

VEIN GRANITE



Vein Platinum Vein Storm Cloud Vein Glacier Vein Sandcastle

MARBLE



Almond Country Grey Ivory Black Silver Grey



Biscuit Classic White Butter Cream Carrera Frost Carrera Ebony



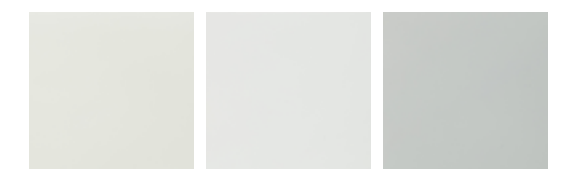
Carrera Tan Carrera Sage Carrera Thunder Golden Carrera Pavestone

ONYX



White Onyx Grey Onyx Brown Onyx

SOLID



Solid Biscuit Solid White Solid Ice Grey

Shower Wall: **MARBLE CARRERA THUNDER**
Custom Shower Base: **SOLID WHITE**
Accessory: Luxury Tall Soap/Shampoo Shelf
Vanity: Wolf Classic™ Cabinets **DARTMOUTH PEWTER PAINT**
Vanity Top: **MARBLE CARRERA THUNDER**

SHOWER YOURSELF IN LUXURY.

Choose the sheer beauty, design flexibility and carefree durability of a cultured marble shower from Wolf Home Products—and transform your new or remodeled bath into a luxurious retreat. It's the natural choice for a beautiful shower.