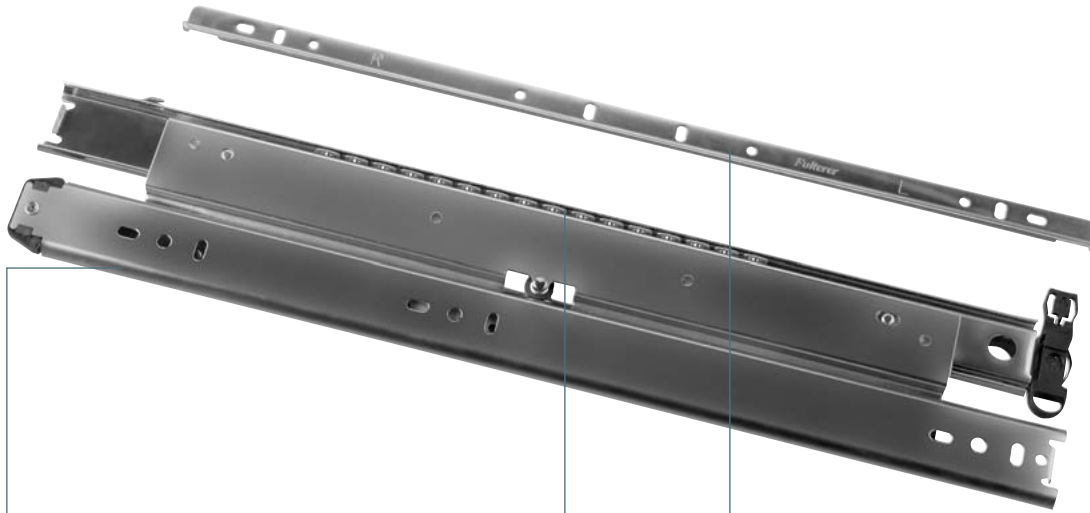


FR 5755

SLIDE TYPE:	Progressive-Action Full-Extension Ball Bearing Drawer Slide with Disconnect Drawer Rail
MOUNTING:	Side Mount

WIDTH:	12.7 mm (0.5 in.)
LOAD CAPACITY:	dynamic up to 65 kg (150 lbs.)

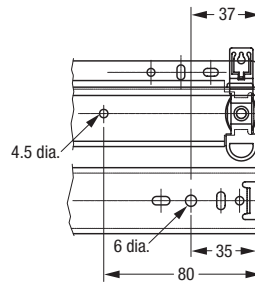
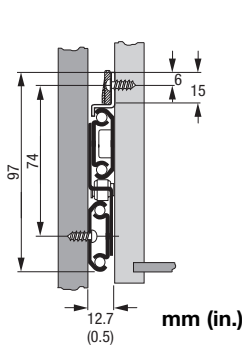


MATERIAL:	cold rolled steel
------------------	-------------------

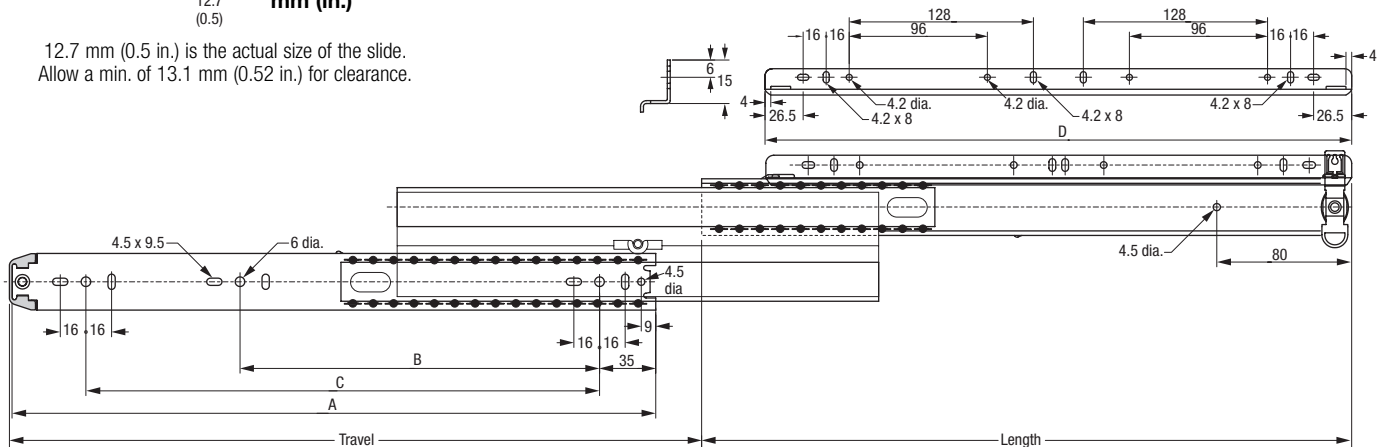
FEATURES:	steel ball bearings, disconnect drawer rail
------------------	---

SPECIFICATIONS:
<ul style="list-style-type: none"> ▶ Most suitable drawer slide for office furniture, lateral file drawers, store fixtures, and large kitchen drawers ▶ Easy lift-off drawer rail disconnect ▶ Hold-close detent to prevent drawer from rolling or bouncing back ▶ Over-extension of 32 mm (1.25 in.) is standard

NOTE:
<ul style="list-style-type: none"> ▶ Note the compatible regular-extension sister model is FR 5707



12.7 mm (0.5 in.) is the actual size of the slide.
Allow a min. of 13.1 mm (0.52 in.) for clearance.



Length	Travel	Cabinet Profile:			Disconnect Rail:		Weight	Order No.	Order No.			
		A	B	C	D	zinc				black chromate		
mm	in	mm	in	mm	in	mm	in	kg	lbs			
299	11.77	327	12.87	299	11.77	224	8.81	265	10.43	*	600080	*
350	13.77	378	14.88	350	13.77	160	6.30	315	12.40	*	6000165	*
401	15.78	429	16.88	401	15.78	224	8.81	320	12.59	*	6000167	6000162
452	17.79	480	18.89	452	17.79	224	8.81	384	15.12	*	6000168	600093
503	19.80	531	20.90	503	19.80	224	8.81	416	16.38	*	6000169	600095
552	21.73	578	22.75	552	21.73	288	11.34	480	18.89	*	6000170	600096
604	23.77	630	24.80	604	23.77	288	11.34	512	20.16	*	6000171	600097
655	25.78	681	26.81	655	25.78	320	12.59	576	22.67	*	6000172	*
706	27.79	732	28.82	706	27.79	320	12.59	608	23.94	*	600082	*

Packing Unit: 10 pair per box

*on request